

# ***Brushless Motor Turbine 64mm for RC Airplane***

***Model: QF2611-4500KV***



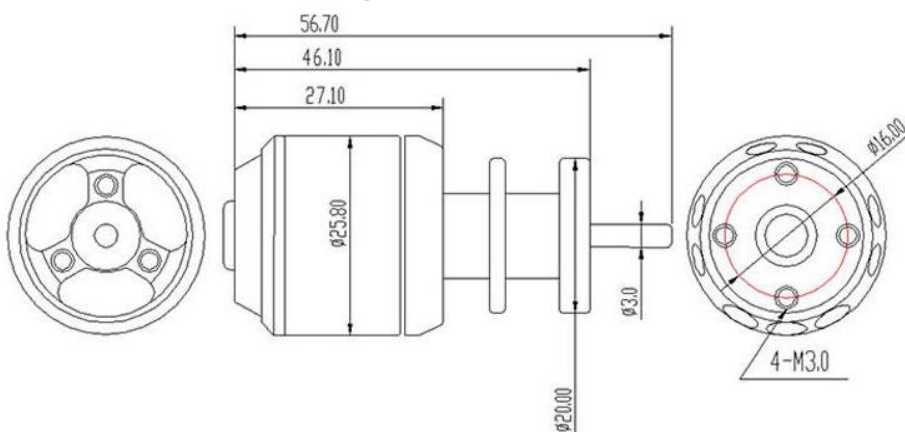
## **Features:**

- Excellent heat dissipation quality ensures reliable duct and aircraft system.
- It provides airplane with high-speed running.
- The blade can convert the rotation of the motor into the propulsion of the aircraft in maximum efficiency.
- Motor offers the airplane strong power and high efficiency.
- It is made of high quality metal with long lifetimes and better work efficiency.

## **Specifications:**

- Speed: 4500rpm/V
- Configuration: 9N6P
- No. of blades: 5 blades
- Idle current @ 10.0v: 2.0A
- No. of cells: 3-4s Lipo
- Max continuous power /10s: 280W
- Max continuous current /1min: 27A
- Max efficiency: <70%
- Shaft diameter: 20.2mm
- Stator length: 11mm
- Motor dimension: 26x47mm
- Applicable airplane duct: 64mm
- Weight: 49g

## **Motor Dimensions Diagram:**



*More Detailed Photos:*



*Made in China*