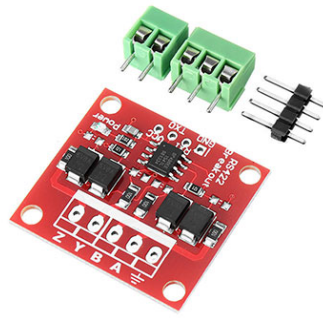


Converter RS422/TTL



Features:

- RS422 interface, two-way communication.
- ABYZ GND interface.
- You need not use GND.
- Ultra-long transmission 1000m.
- With 15KV ESD protection.
- Increase a overcurrent protector resistor (power 10ohm limiting current) TVS diodes, anti-lightning, anti-peak voltage.
- Effectively reduce the long-distance communication echo interference with 120-ohm termination resistor.
- A power indicator light.
- RS485 interface has a 2-wire and 3-wire mode, providing GND.
- you can choose whatever.
- RS485 interface uses a conventional 301 terminals.
- Wiring is simple.
- You can also weld 2.54mm pin spacing TTL side, using a 5V DC power supply.
- RXD TXD is compatible with 5V logic signal.
- The communication speed is 2.5Mbps.

Specifications:

- Dimensions: 3cm x 2.8cm
- Weight: 20g

Packing List:

- 1 x RS422 signal module
- 1 x Pin header
- 1 x Terminal

Made in China