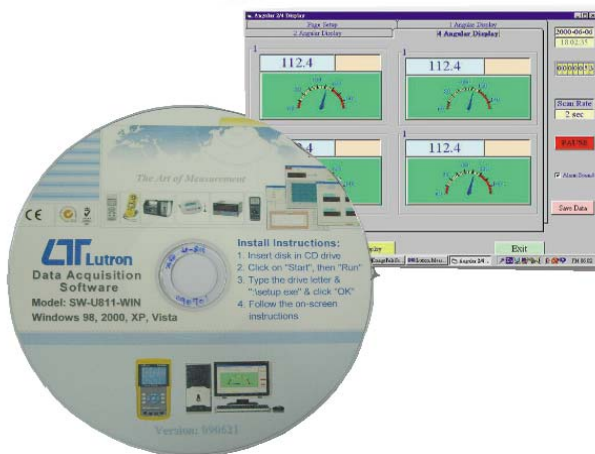


DATA ACQUISITION SOFTWARE

Model : SW-U811-WIN



1. INTRODUCTION

The SW-U811-WIN is a powerful WINDOWS program software which enables full line RS232 serial instruments to be with data logging function.

Three kinds of different displays provide you choice depends on your favorite. Maximum 16 channels monitoring at the same time let you can get a complete data information. High, Low warning to monitor any unusually situation. Sample rate setting from 2 to 3600 seconds to satisfy your different demands.

.xxx.mdb data file can be retrieved by EXCEL, ACCESS., and other kinds of database software. Data analyze and demonstrate easily.

2. GENERAL SPECIFICATIONS

System Requirement	Computer with following operating system : Win 98 Win 2000 XP VISTA Monitor : VGA, EGA monitor
Common Port	Select COM 1 to COM 16.
Function	Data recorder, text display, analog display, chart display, high/low limit, data query, text report, chart report.
Data Record	Auto or Manual
Sample Rate	2 to 3,600 seconds.
Data Save	Data file : XXX.mdb. * Automatic save to disk. Data file : XXX.txt. * When execute the " Print data " function, will generate the xxx.text file.
Accessories Included	CD disk..... 1 PC. Operation manual..... 1 PC.
Optional Accessory	RS232 cable, Model : UPCB-01 Direct RS232 cable be used to connect the meter to the computer (COM port).
	RS232 cable, Model : UPCB-02 Isolated RS232 cable be used to connect the meter to the computer (COM port).
	USB cable, Model : USB-01 USB interface cable be used to connect the meter to the computer (USB port).
	RS232 cable, Model : UPCB-04 * UPCB-04 is the double D9 RS232 cable. * Available for FG-5000A-232, FG-20KG-232.

Made in Taiwan