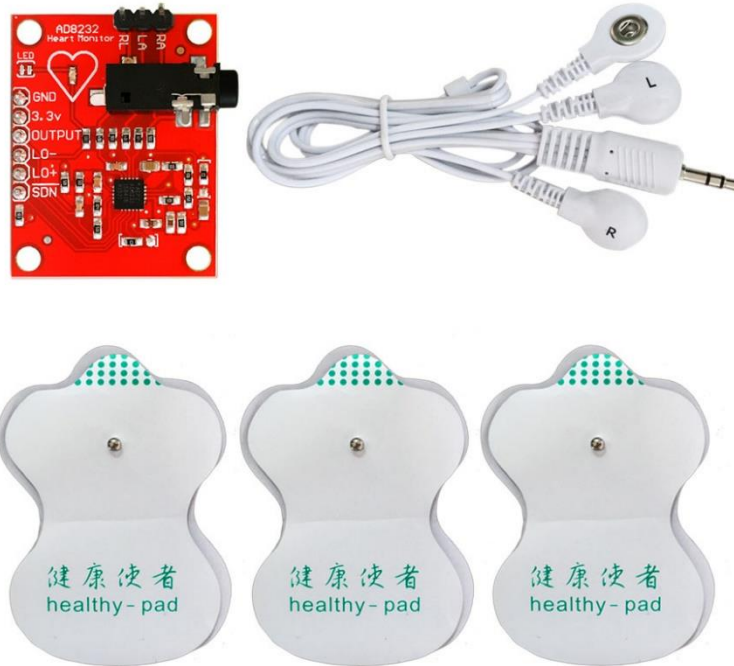




# AD8232 ECG Heart Monitoring Measurement Sensor Module Pulse Signal Board Set

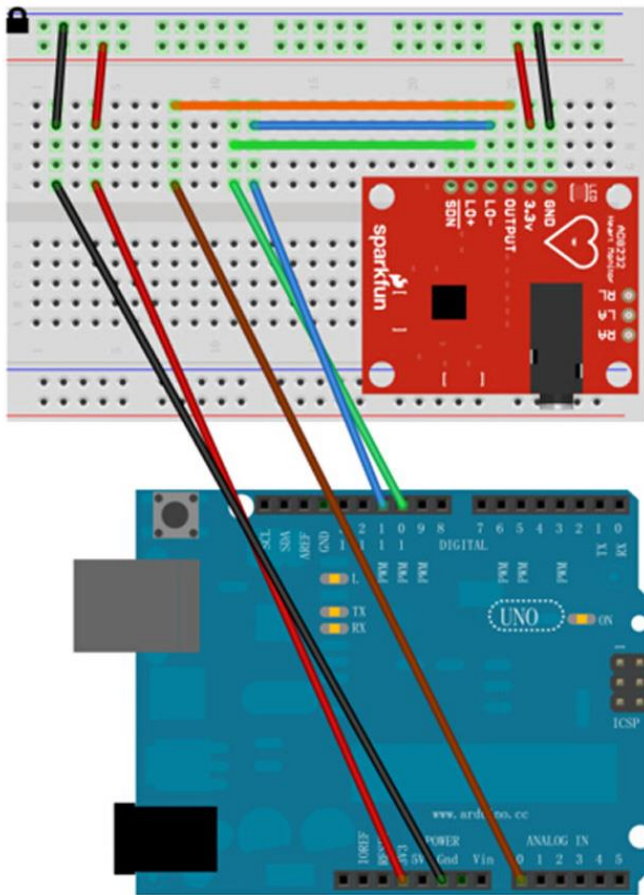


## Features:

- The AD8232 is an integrated front-end for signal conditioning of cardiac bioelectrical signals for heart rate monitoring.
- This is a low-power, single-lead, heart rate monitor analog front end for a wide range of vital signs monitoring applications.
- Material: Plastic
- Supply Voltage: DC 3.3V
- Output: Analog output
- Interface (connected to RA LA RL): 3PIN 2.54 pin or headset
- Operating Temperature: -40°C – +85°C
- Board Size: 36\*31\*18 mm



### Pin Connections:



Board Label	Pin Function	Arduino Connection
GND	Ground	GND
3.3v	3.3v Power Supply	3.3v
OUTPUT	Output Signal	A0
LO-	Leads-off Detect -	11
LO+	Leads-off Detect +	10
SDN	Shutdown	Not used

*Made in China*