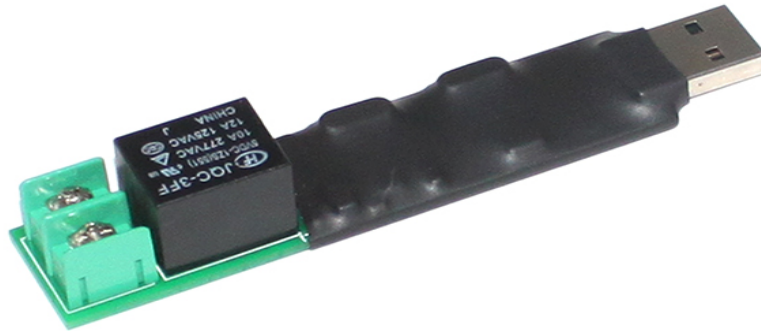
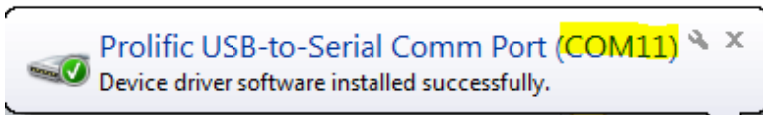


USB CONTROL SWITCH

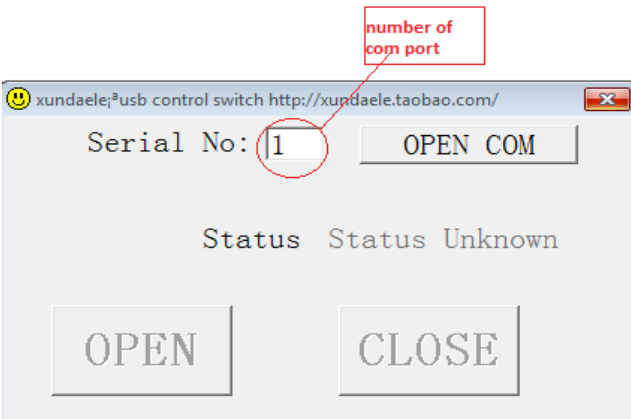


Manual:

1. Put (USB CONTROL SWITCH 1CH) on PC
2. Open software (Icon: 😊), and find which com port on PC using USB CONTROL

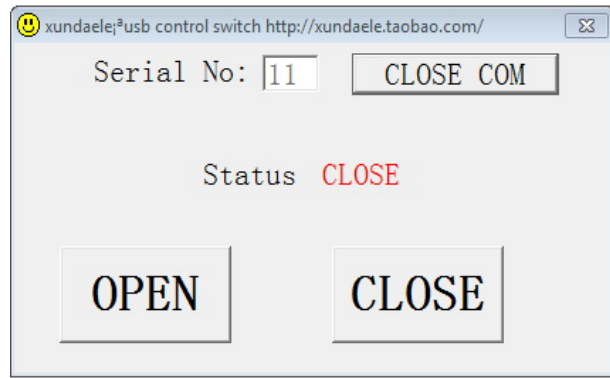
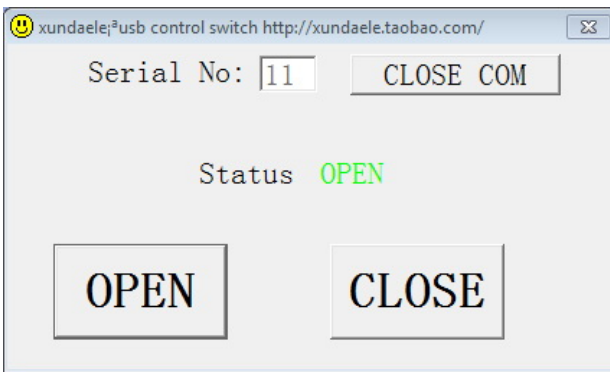


, and put number of com port on serial No”



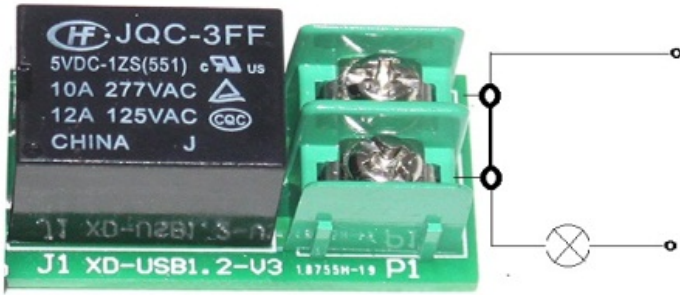
3. press open com , now your ready to use the USB control.





4. A. When press OPEN

Status is open :relay is operate: Switch is on.



B. When press CLOSE

Status is Close :relay is stop: Switch is off.



5. When you finish your work , you have press