

# ***Pneumatic Fitting 12MM Tube To 1/2" Elbow Thread Male***

## ***Model:PL12-04***



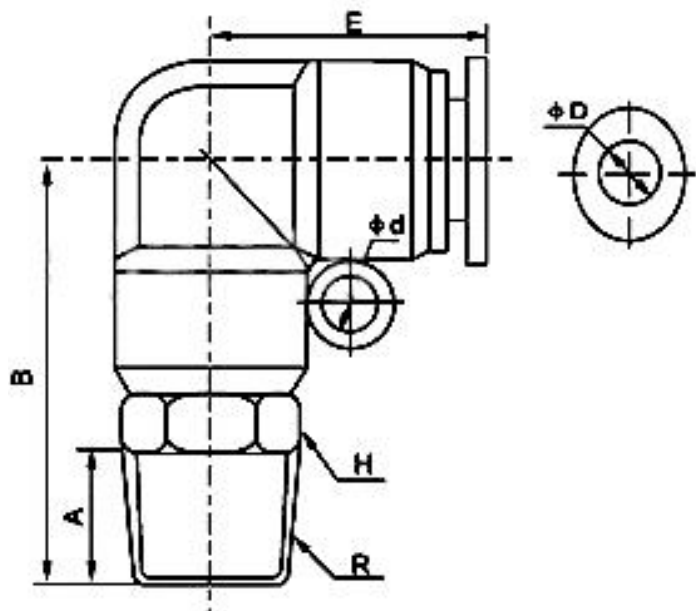
### **Features:**

- Quick installation, simple and flexible, space-saving, easy to connect tube by one touch.
- Even after installation ,the direction of tubing can be changed freely
- All tapered threads are pre-coated with Teflon with fine seal performance.
- Nickel-Plated brass body ensures anti-corrosion and anti-contamination.
- Fittings are equipped with a Gasket, O-ring and Teflon-treatment on the thread.

### **Specifications:**

<b>Gender</b>	Male
<b>Pressure Range</b>	0~1.0 MPa (0~150 PSI)
<b>Negative Pressure</b>	-100 Kpa (-750Torr) (-29.5 In Hg)
<b>Max Pressure</b>	1.5 Mpa (250PSI)
<b>Applicable Tube</b>	Polyurethane, Nylon, Polyethylene, Polypropylene
<b>Used for</b>	<b>Pneumatic Air</b>
<b>Release Button</b>	POM (Poly oxy methylene copolymer)
<b>Plastic Body</b>	PBT (Polybutylene terephthalate)
<b>Thread Sealant</b>	Teflon
<b>Used with Tube Size</b>	1/2" (Outside Diameter)
<b>Temperature Range</b>	0 ~ 60 °C (32~140F)
<b>Material</b>	Plastic and Nickel Plated Brass
<b>Main Color</b>	Blue and Yellow Metal

## Dimensions:



Model	ΦD	R	A	B	H	E	Φd
PL6-01	6	R1/8	7	27.5	12	20.8	3.5
PL6-02	6	R1/4	9	29.5	14	20.8	3.5
PL6-03	6	R3/8	10	30.5	17	20.8	3.5
PL6-04	6	R1/2	11	32	21	20.8	3.5
PL8-01	8	R1/8	8	31.7	14	23.5	4.5
PL8-02	8	R1/4	10	33.8	14	23.5	4.5
PL8-03	8	R3/8	10	33.8	17	23.5	4.5
PL8-04	8	R1/2	11	35.5	21	23.5	4.5
PL10-01	10	R1/8	8	35.5	17	27.4	4.5
PL10-02	10	R1/4	10	37.5	17	27.4	4.5
PL10-03	10	R3/8	10	38	17	27.4	4.5
PL10-04	10	R1/2	11	38.6	21	27.4	4.5
PL12-01	12	R1/8	8	38	19	30.3	5
PL12-02	12	R1/4	10	39.5	19	30.3	5
PL12-03	12	R3/8	10	40.5	19	30.3	5
PL12-04	12	R1/2	11	42	21	30.3	5

*Made in China*