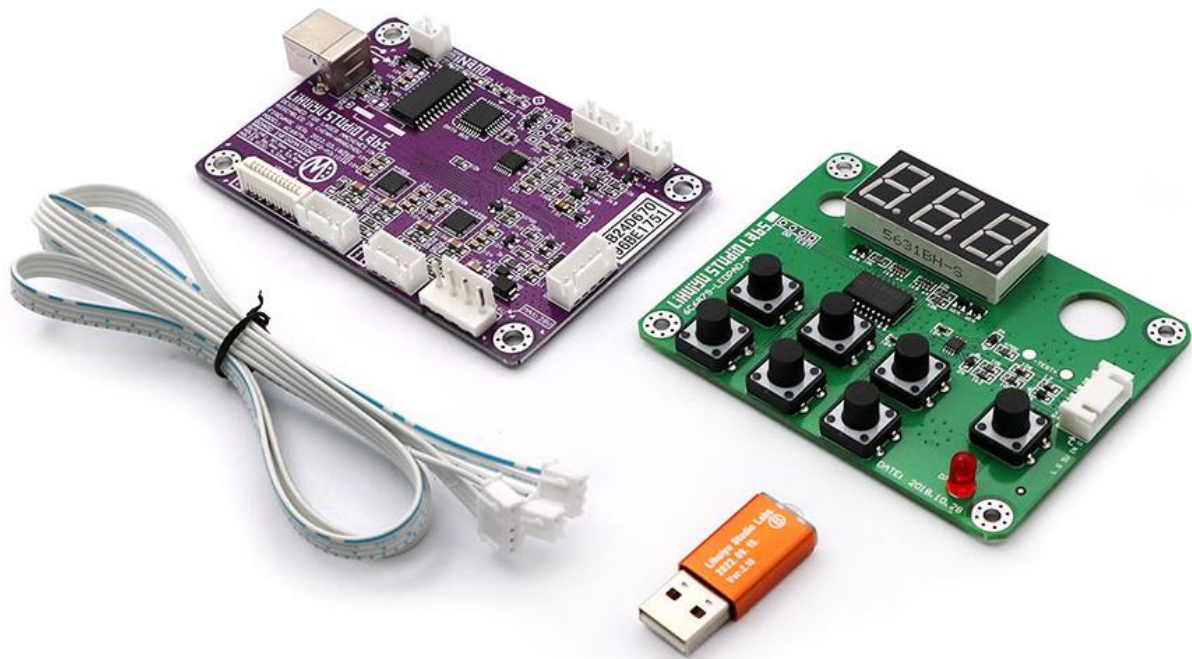


# M2 Nano Laser Controller



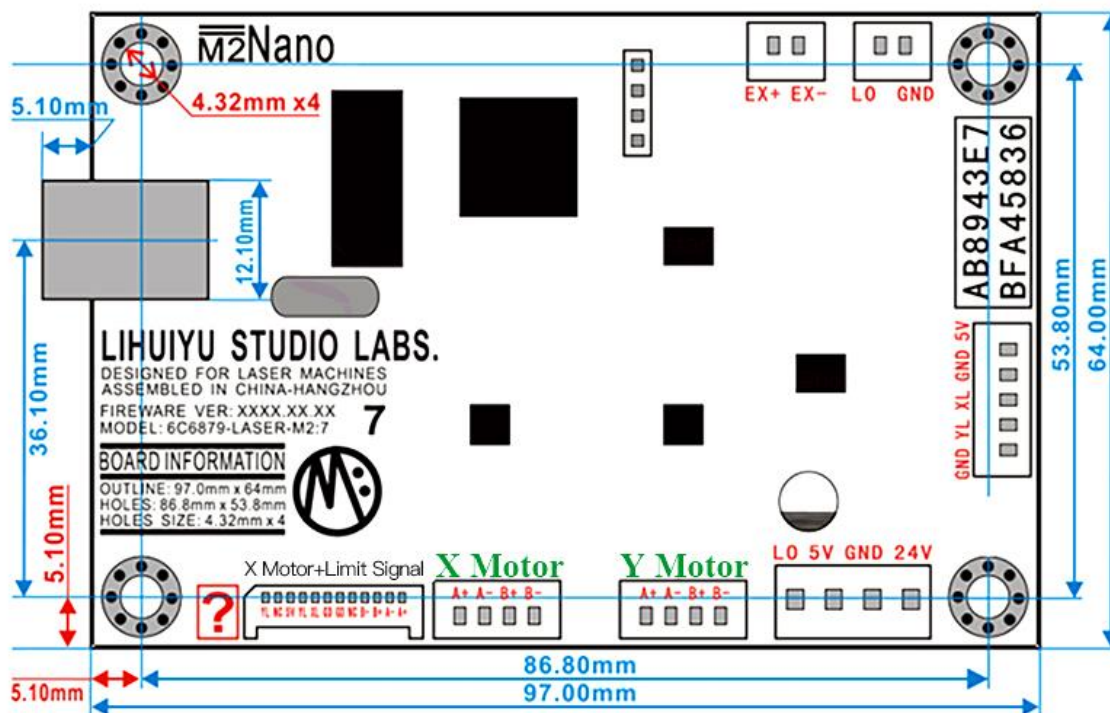
## **Features:**

- The lightest motherboard in the industry
- Lowest calorific value
- X-axis drive capability
- Y-axis drive capability
- Only about 30 grams
- 97mm x 64mm
- Total heat loss is less than 2W
- Average Value: 0.25A / phase, peak value: 0.36A / phase
- Average Value: 0.33A / phase, peak value: 0.47A / phase
- M3 motherboard is a square port USB interface motherboard:
  - 1- Support carving, cutting, image engraving, slow marketing
  - 2- Support for receiving unlimited number of graving data
  - 3- Support USB dropped breakpoints continued
  - 4- Support unlimited engraving format
  - 5- Support USB dropped detection
  - 6- Supports accidental breakpoints

[More Detailed Photos:](#)

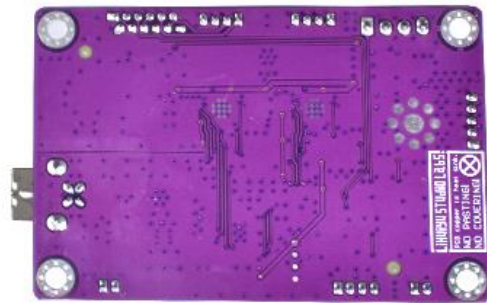
# MAIN TECHNICAL PARAMETERS

## M3 Nano Laser Controller Motherboard

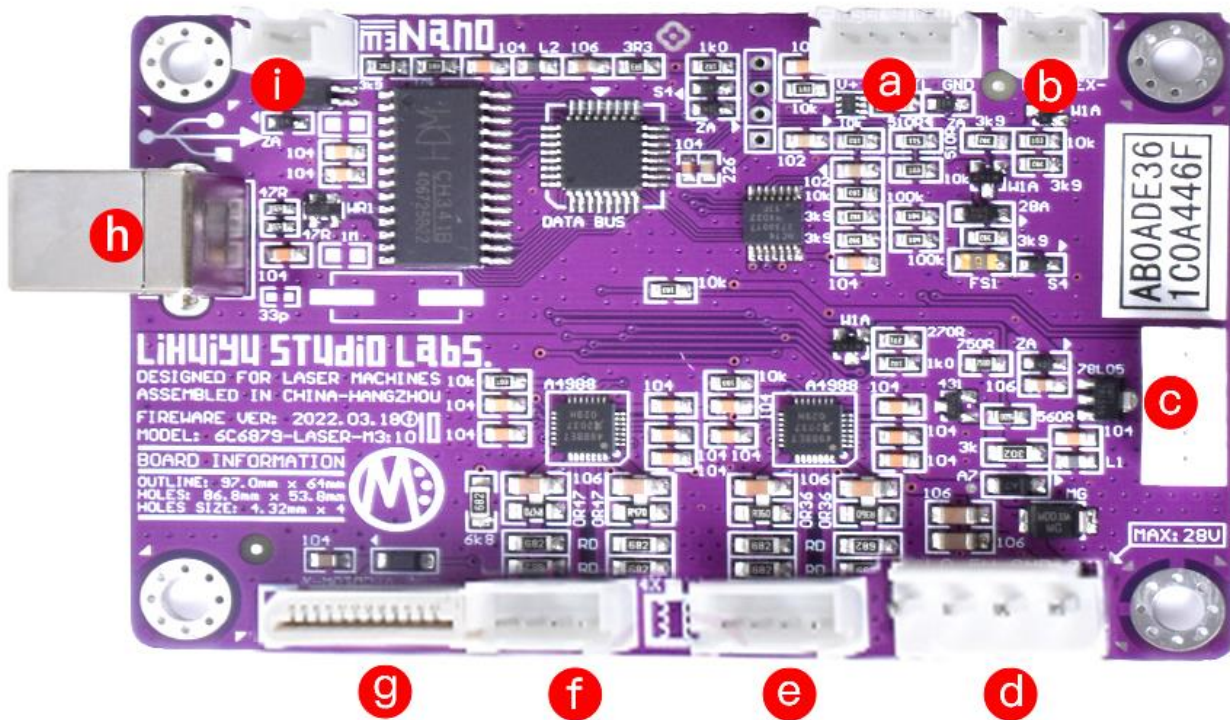




Front



Back



a: External Synchronous Control Signal Output.

b: Laser control signal output(when using independent laser power supply,connect here to the power supply).

c: Limit signal input:Can be connected to mechanical switches or other forms of switches.

d: 5V and 24V input port:

It also includes the laser control signal output LO for controlling the integrated laser power supply

e: Y-Axis Stepper Motor.

f: X-Axis Stepper Motor.

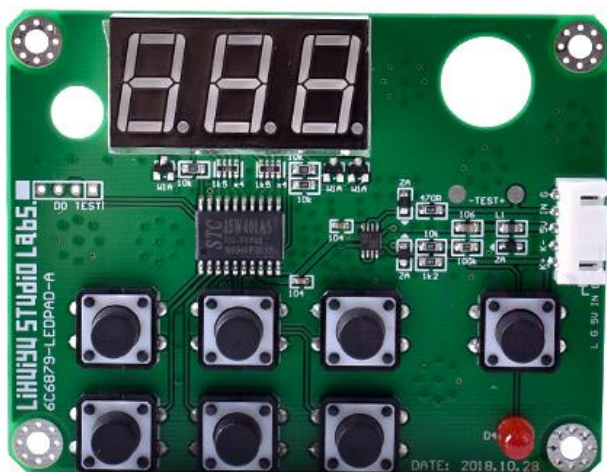
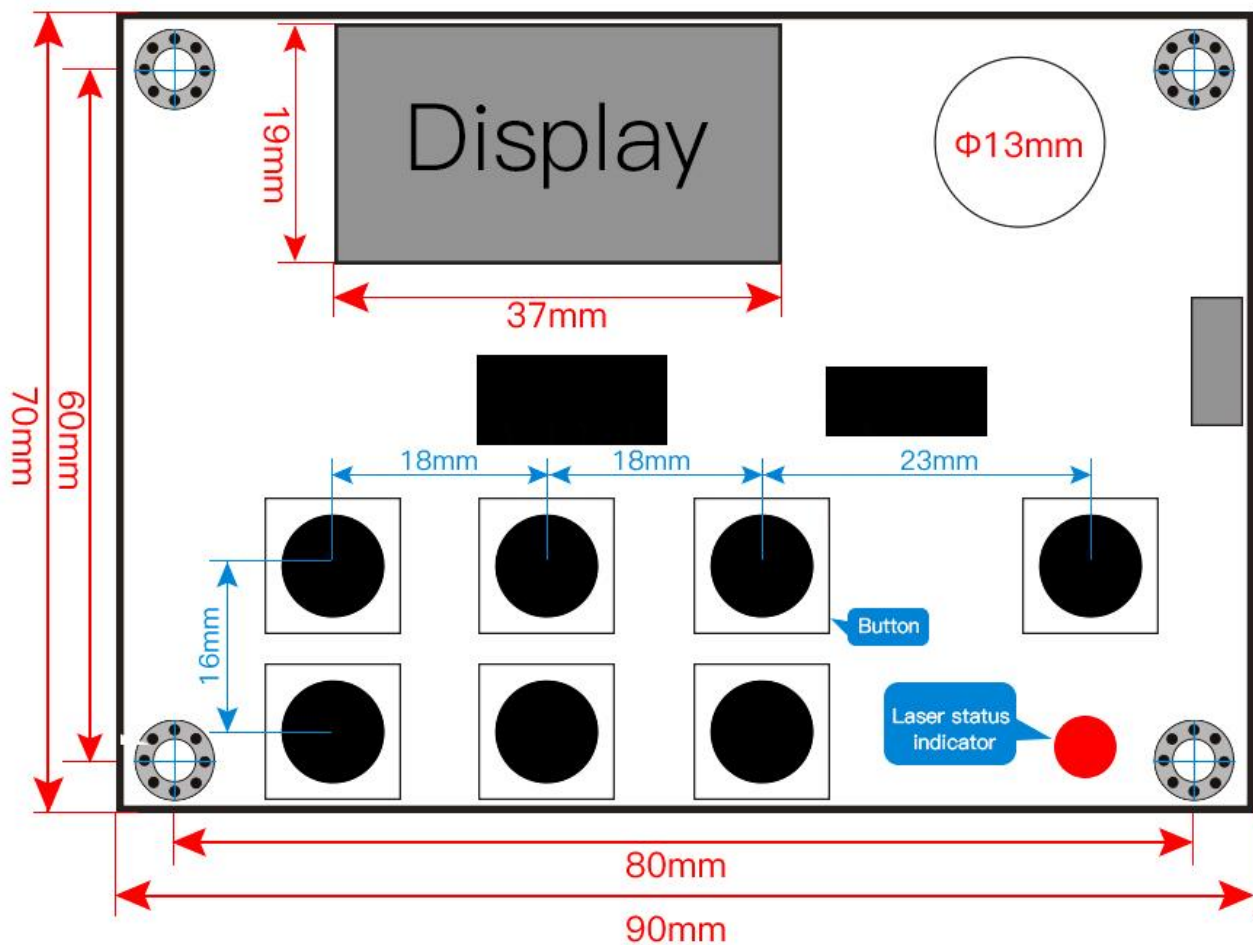
g: X-Axis Stepper Motor+Limit signal input.

h: USB Port.

i: Multifunctional reuse button.



# M2 CONTROLLER PANEL



M2 Controller Panel



Cable

*Made in China*