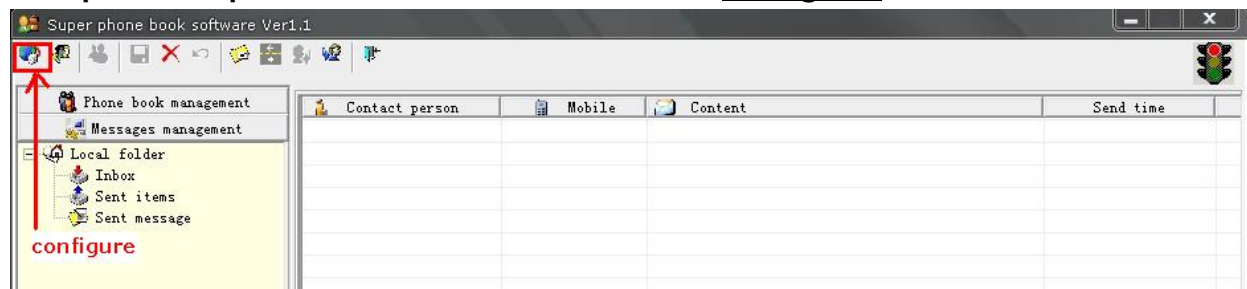


User's Manual for SMS Device

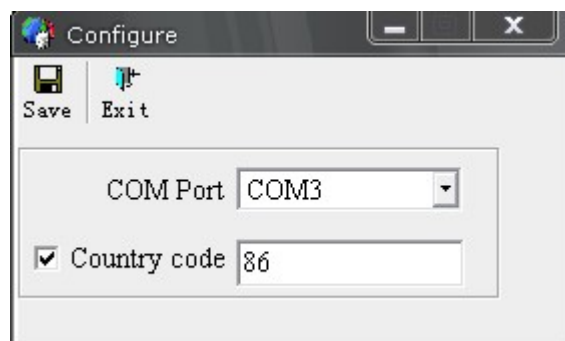
The following instruction would be a great help for you to get through our GSM SMS Device and how to let it to be your best hand for the SMS function.

1. Intall antenna, insert your GSM Simcard, connected our device with your PC or Laptop, then the power adapter.
2. Please check the indicator light to make sure external power is available.
3. Install the attahced USB Driver, then connected SMS Device with your PC or Laptop.
4. Open our special software for SMS, select configure.



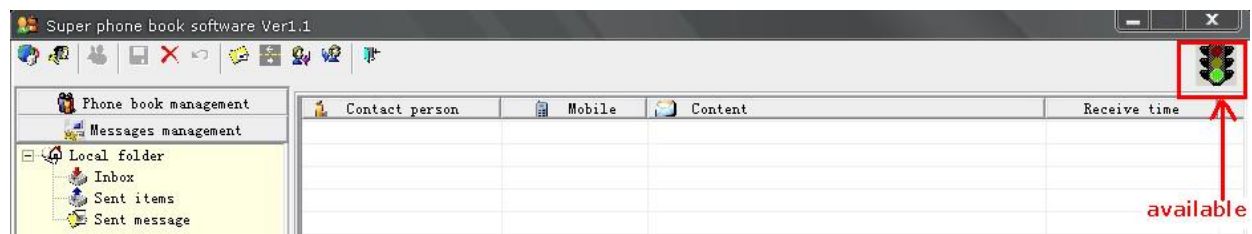
P4-001

- 4.1. Fill in your country code and save



P4-002

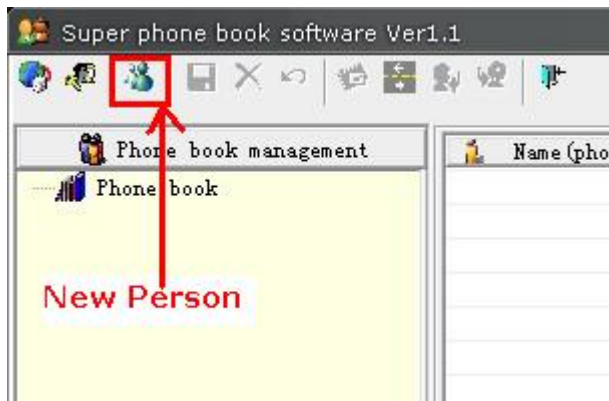
- 4.2. Please check the software indicator light, if green, you can start next step. If still red as picture 4-001, please check the connection and the configure again.



P4-003

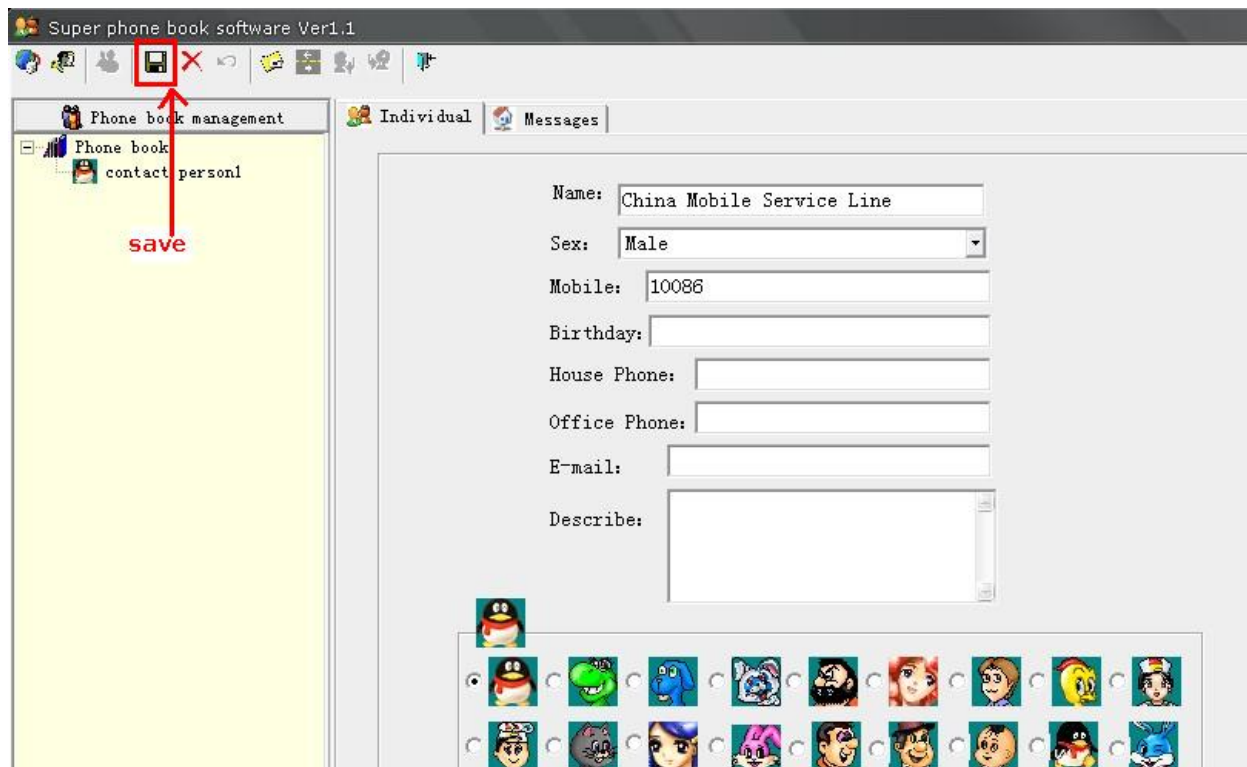
5. Phone Bood Management

5.1 Select "Phone book management" – "New Person"



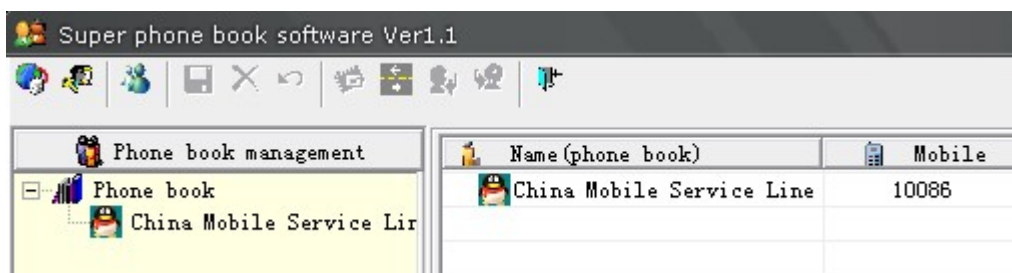
P5-001

5.2 Fill in the blank of the contact person information and save.



P5-002

5.3 Target Contact Person was add to your list success.

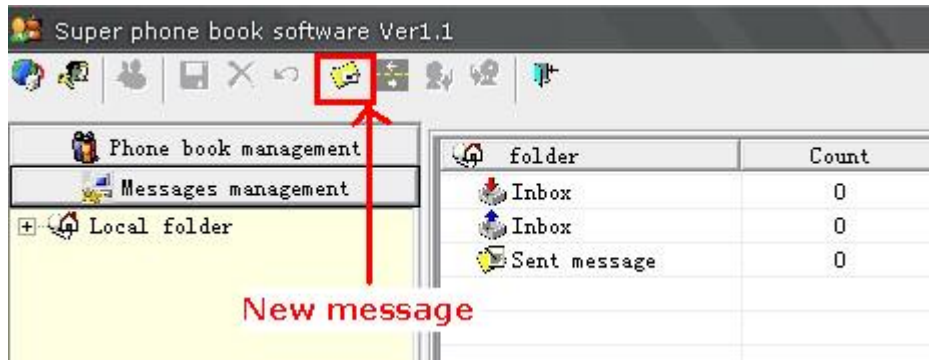


P5-003

6. Messages Management

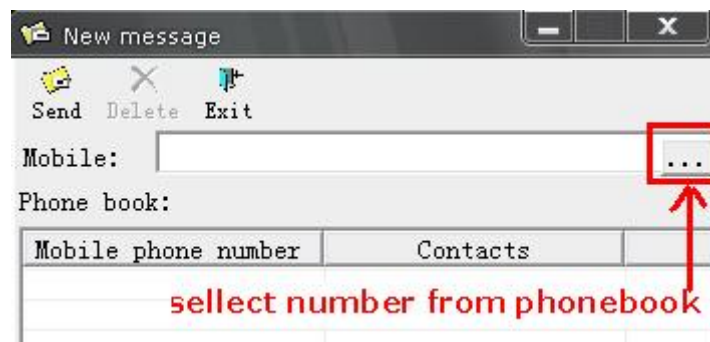
7.

6.1 Select Messages Management and start sending short messages



P6-001

6.2 Fill in your target number, click "Enter" or select number from phonebook



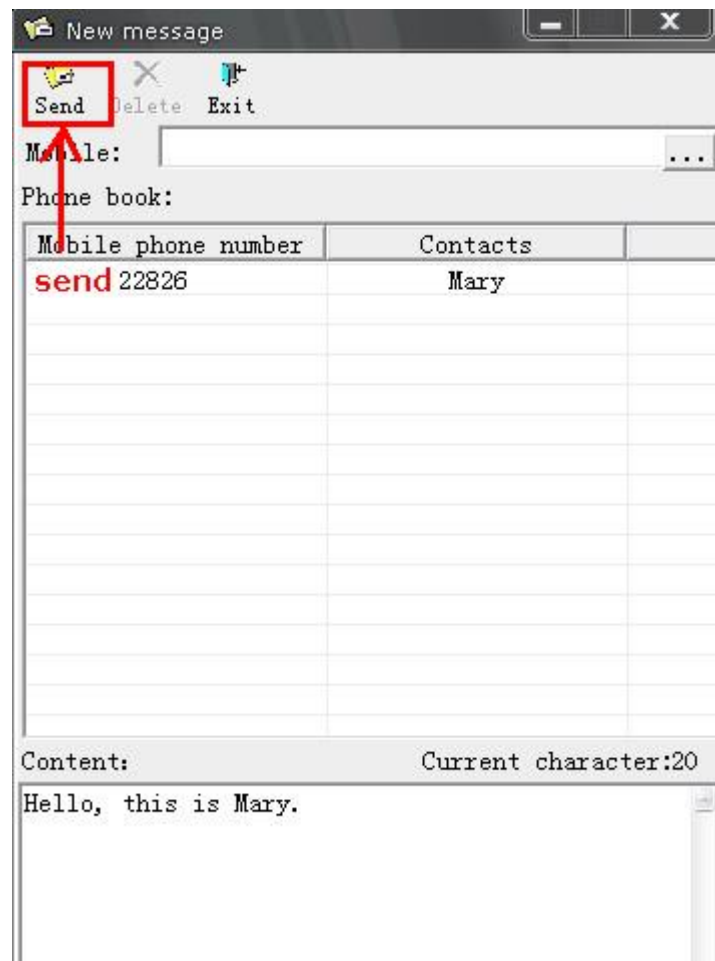
P6-002

6.3 You can select all the number to send messages to many people or select to send messages to one person. Don't forget **Confirm** your selection



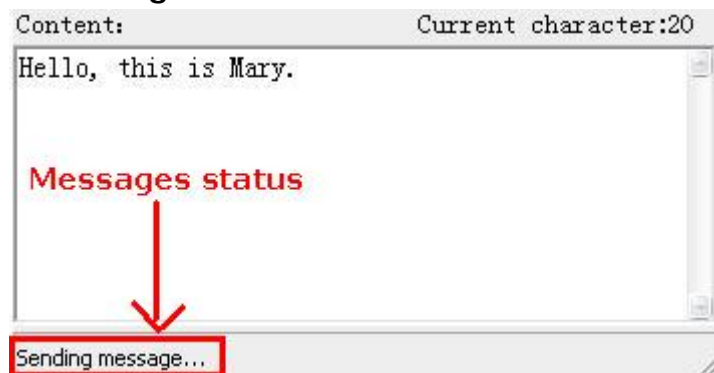
P6-003

6.4 Write down your text, select send



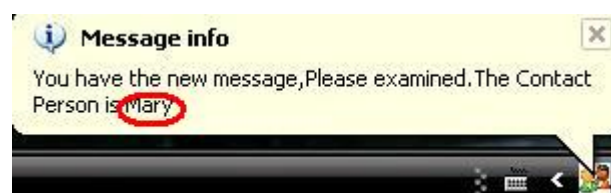
P6-004

6.5 You can check the messages status in the bottom of the message box



P6-005

6.6 New message notice



P6-006

Contact person in phonebook



P6-007

Strange number message

6.7 If the messages were sent succeeded, they would be stored in the folder "Sent message", if the messages couldn't delivered, they would be stored in the folder "Sent itmes".