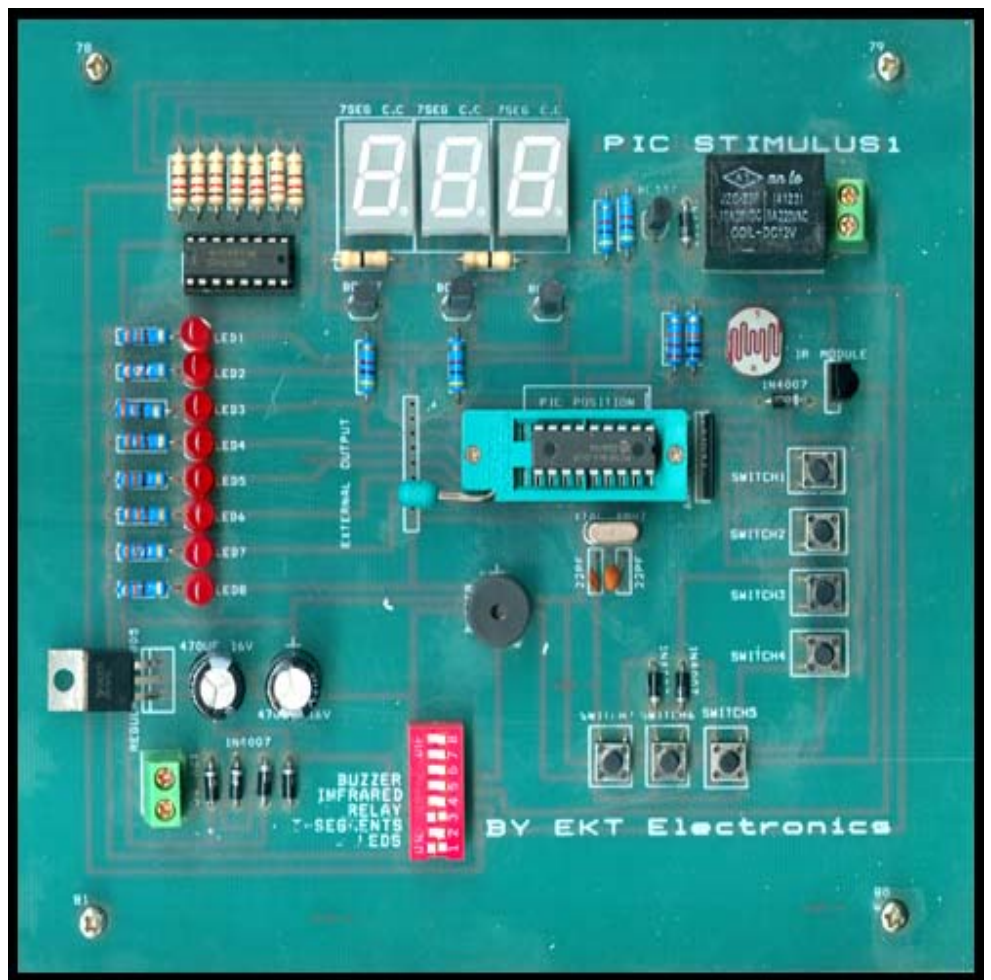


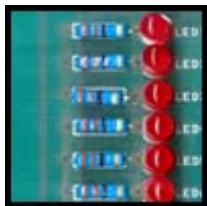
# Microchip PIC development tool

## PIC STIMULUS 1

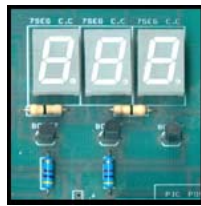
**Support 18 pin microcontrollers** (it comes with PIC16F84A). Each element and pin **is clearly marked** on the board. It is possible to test most of the industrial needs on the system: remote control, counters, timers etc. **Examples** in assembler are included with the system.



### WHAT'S ON BOARD



**8 LEDS FOR DISPLAY**  
Connected to port B.



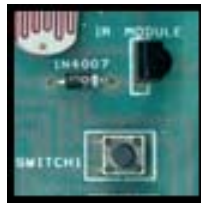
**THREE 7-SEG DISPLAY**  
connected to display in multiplex mode.



**RELAY 12V**  
output to driving any external interface.



**Sound BUZZER**  
Add an audible effect to your projects.



**Infra-red RECEIVER module**  
to read data from any IR remote.



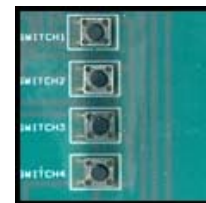
**Regulated 5v Power Supply**



**LDR**  
Light depend resistor detect the dark presence



**Three switches**  
connected in matrix mode.



**Four switches**  
Connected in directly to i/o pins.



**DIP Switches**  
To make the hardware Compatible with tutorials (included in the CD).



**ZIF SOCKET**  
For 18 pins with PIC16f84 included.