

120Leds/M 10M Kit LED Lights WS2811 2835SMD 24V Running Water LED Strip Flowing Light Wireless Controller Flexible Lamp Ribbon

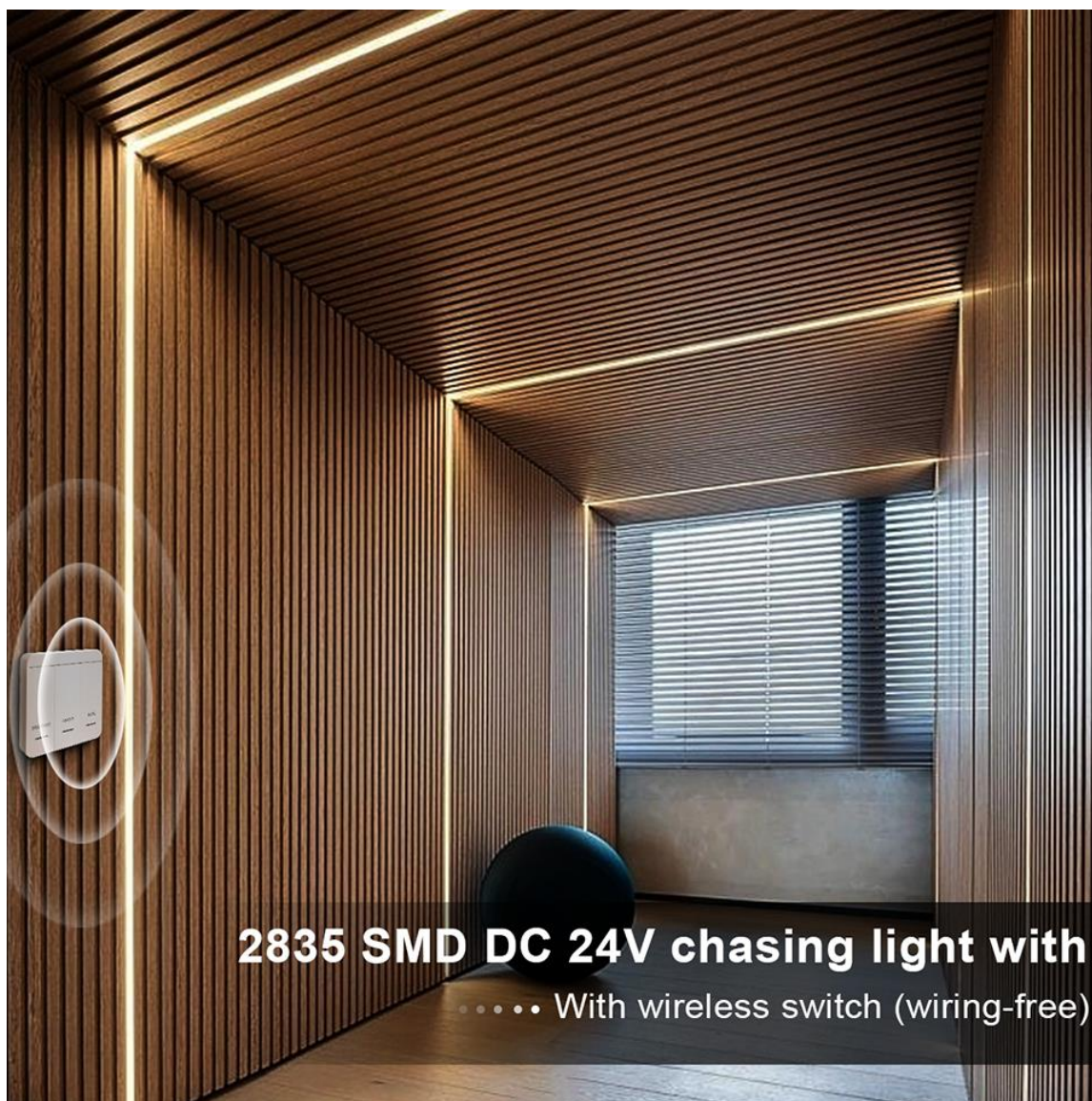


Specifications:

- LED Type: SMD2835 + WS2811 IC
- LED Quantity: 120LEDs/M
- Working Voltage: 24V DC
- Strip type: SMD
- Waterproof: NO
- Length: 10M
- Color: White (6000K-6500K), Warm White (3000K-3500K), Natural White(4000K-5000K)
- Control IC: WS2811
- Power Generation: Switch
- Average Life: 20000hrs
- Power Source: DC
- Power Consumption: 4W/m
- Occasion: Living Room

Wireless RF Controller:

- 1- Powered by 12V 27A Battery
- 2- Max control 2048 Pixels (IC)
- 3- Speed/Brightness is adjustable
- 4- 10-20 Kinds of different modes changeable
- 5- With Double-side tape on the back, easy to install at anywhere
- 6- 15m remote Control distance



Product parameters

Product Name: 2835 SMD Strip Light

Color: white/warm white/natural white

Voltage: 24V

Control mode: switch control (wiring-free)



1 SPEED/BRIGHT

When the light is "ON", press "Speed" to adjust the speed
Press the "ON/OFF" button twice more, success!

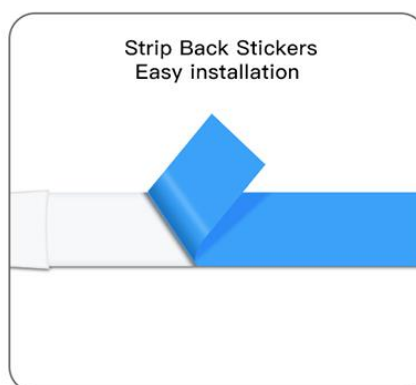
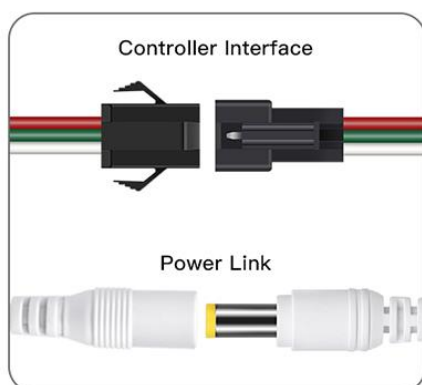
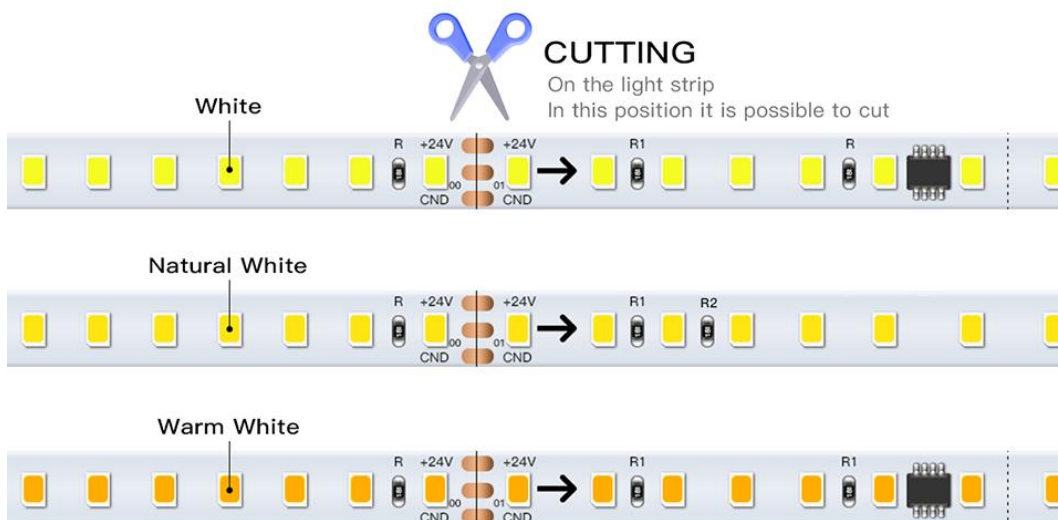
When the light is "OFF", press the "brightness" button to adjust the brightness
Press the "ON/OFF" button again. Success!

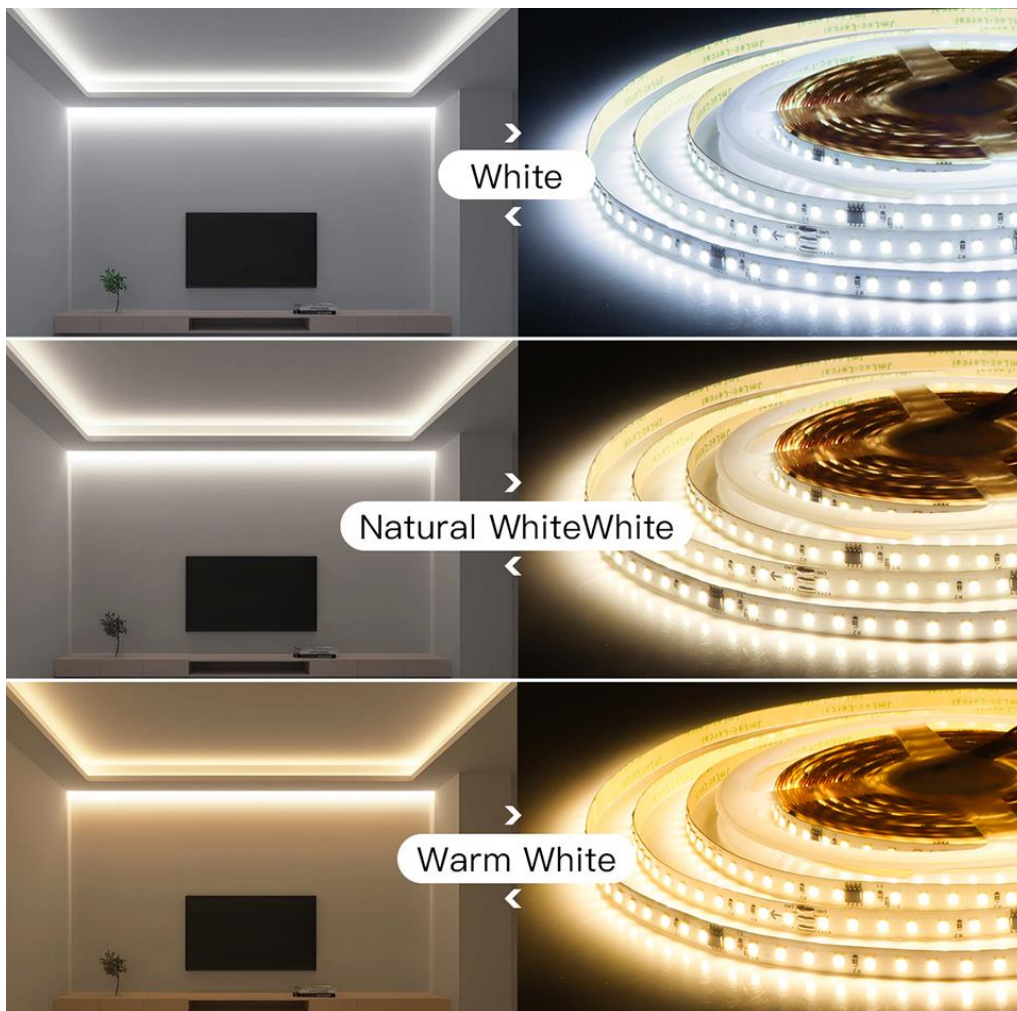
2 ON/OFF

Turn on the light/off the light

3 MODES

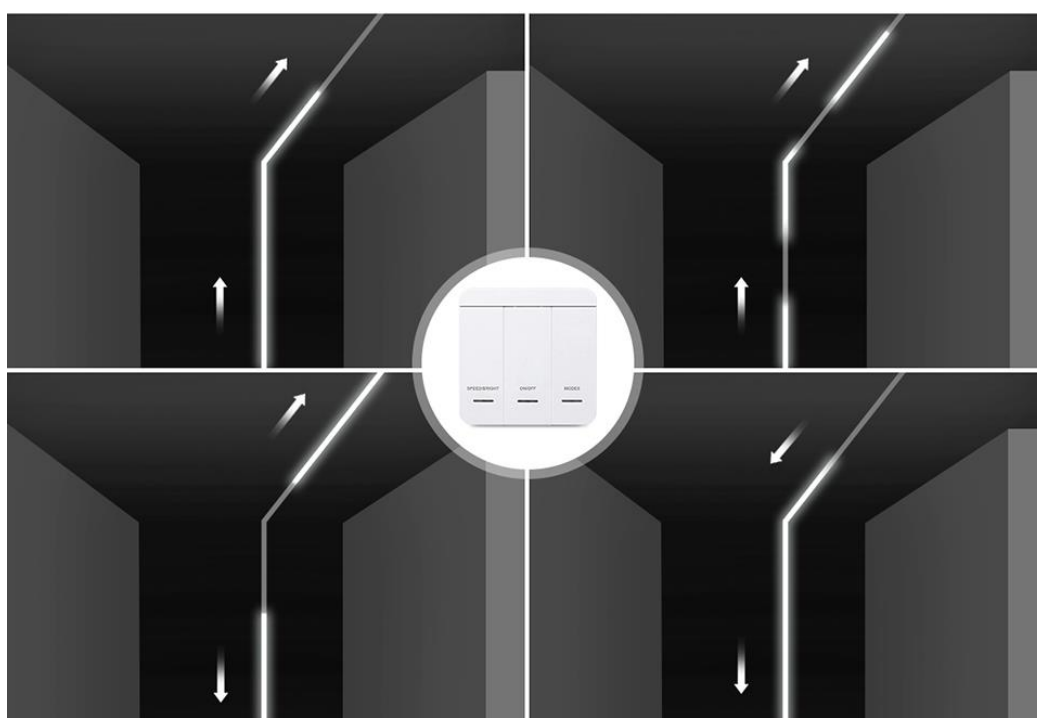
Switching of multiple modes (17-20 lighting effects)

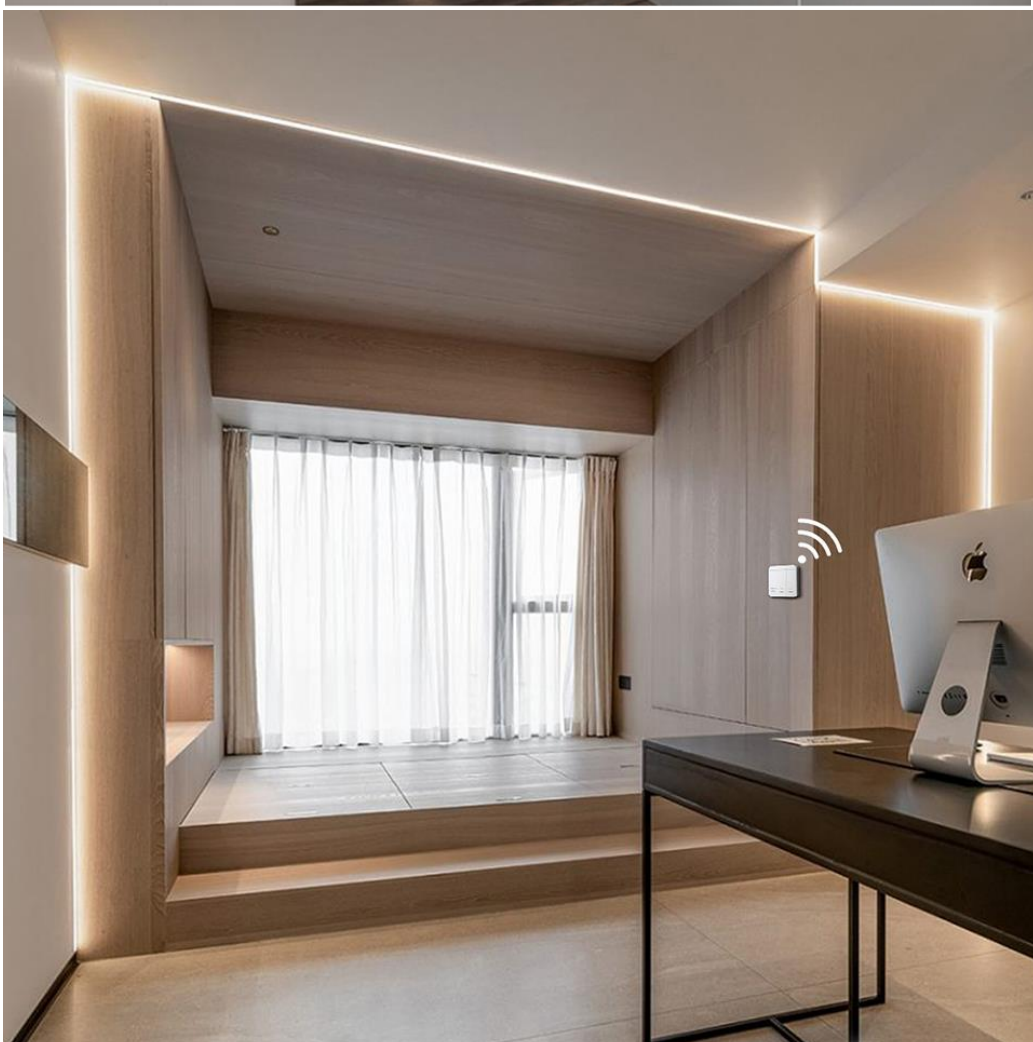


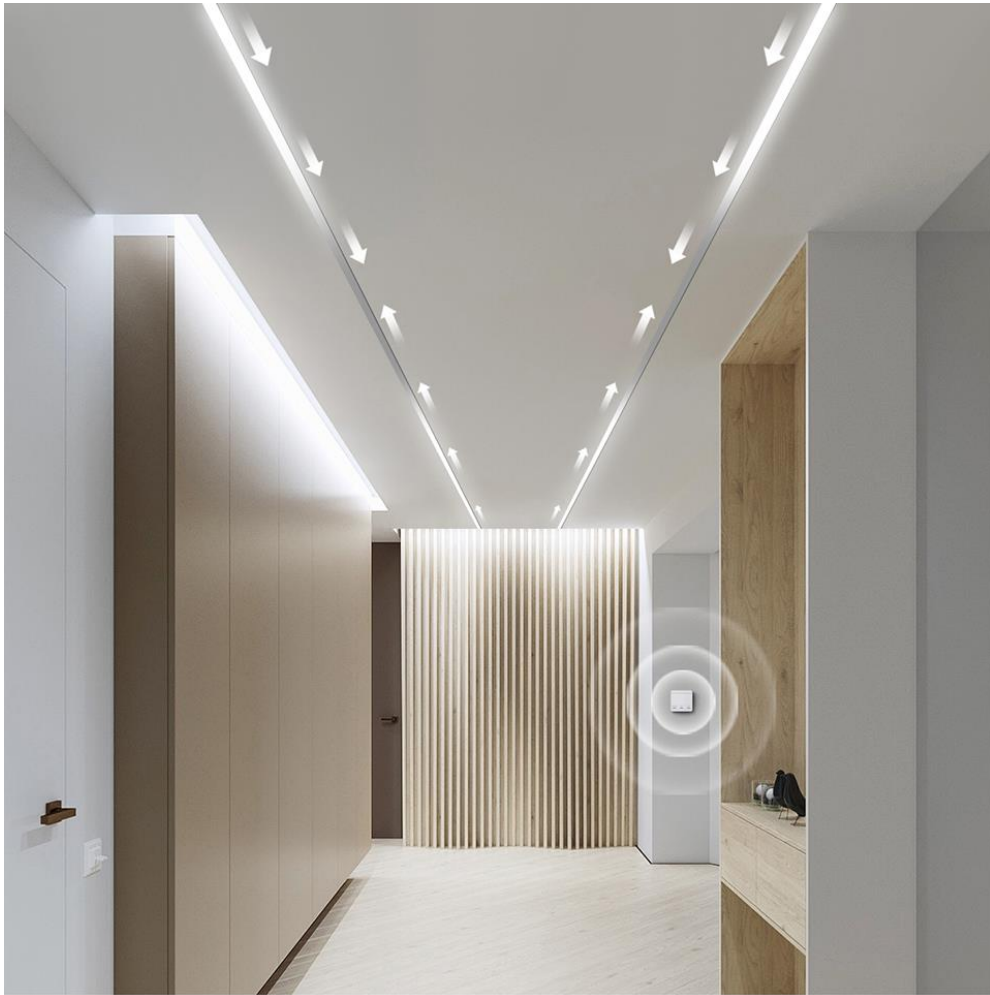


ULTIPLE LIGHTING MODES

Can be based on different scenes
Different needs, switch the lighting effect you want







Installation steps

(No wiring required)
Easy to install, easy to use



It can be found in this place
Open the panel
Install the battery in place



Use of double-sided adhesive tape
Stick the panel switch solid to the wall

**Note: Remote control distance
is within 15 meters
exceeds the range
will affect the control**



*Remote Control Distance
Within 15m



Made in China