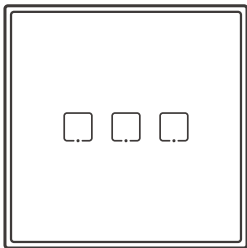


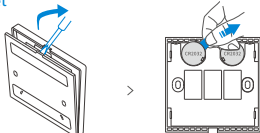
**SONOFF**

**TX T2EU-RF**

User manual V1.0



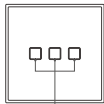
## Pull out the battery insulation sheet



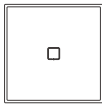
- ① The device has the version with battery and without battery.

## Product Introduction

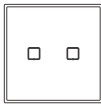
This device is used with SONOFF TX Wi-Fi smart wall switches (with 433MHz) together, and also works with other 433MHz smart devices.



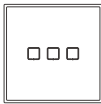
Touch switch/RF pairing button



1C



2C



3C

- ① The device only supports pairing one button at a time. Please refer to the switch user manual for RF pairing and clearing method.

## Product Specification

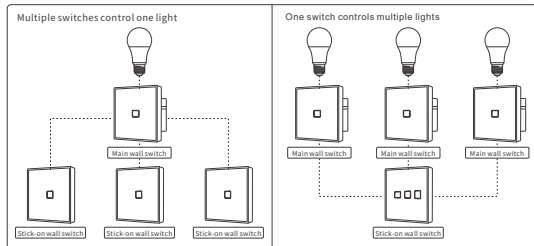
Model	T2EU1C-RF/T2EU2C-RF/T2EU3C-RF/T3EU1C-RF/T3EU2C-RF/T3EU3C-RF		
Power supply	6V (3V button cell x 2)		
Battery model	CR2032	RF	433.92MHz
Materials	PC+tempered glass panel	Dimension	86x86x9mm

- ① T3EU1C-RF/T3EU2C-RF/T3EU3C-RF with black color are not released yet.

## Supported SONOFF devices

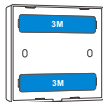
- RFR2
- BASICRFR3
- SlampherR2
- 4CHPROR3
- TX EU/UK/US Wi-Fi smart wall switches (with 433MHz) series

## Control Ways

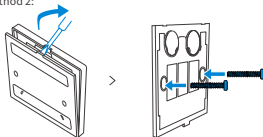


## Installation Methods

Method 1:



Method 2:



ⓘ The device weight is less than 1kg. The installation height of less than 2m is recommended.