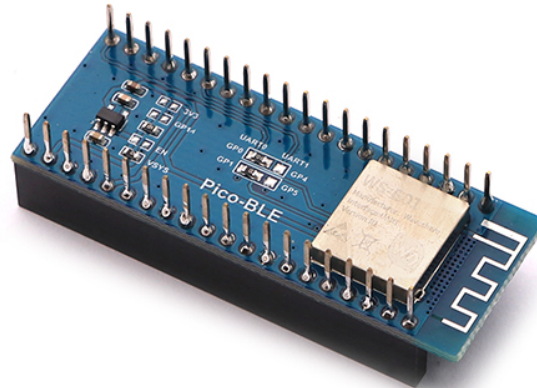


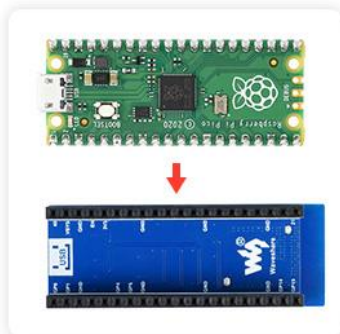
RaspberryPi

# ***Dual-Mode Bluetooth Module for Raspberry Pi Pico, SPP/BLE, Bluetooth 5.1 Model: Pico-BLE User Manual***



## **Raspberry Pi Pico Header Compatibility:**

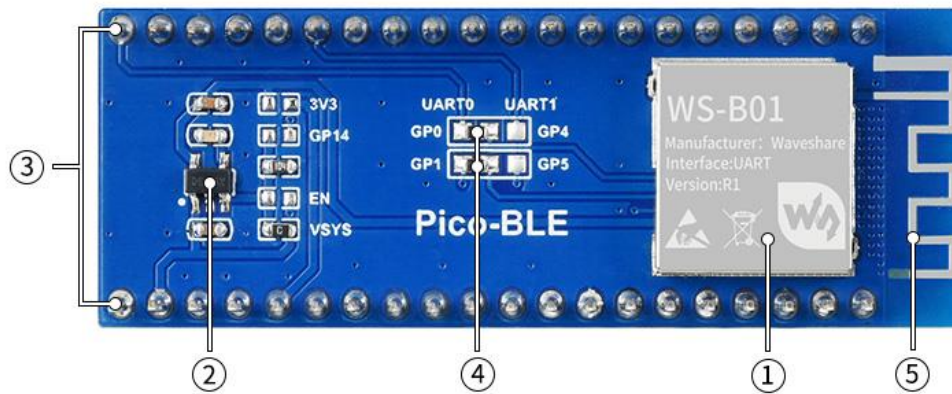
Onboard Female Pin Header for Direct Attaching To Raspberry Pi Pico,  
Stackable Design



\* Please correctly connect the Module and Raspberry Pi Pico as the picture shown.

- For reference ONLY, Raspberry Pi Pico is NOT included.

## What's on Board:



- 1- Bluetooth module
- 2- RT9193-33(3.3V regulator)
- 3- Raspberry Pi Pico header
- 4- UART input pins selection
- 5- Onboard Bluetooth antenna

## Pinout Definition:

GP0	1	GP0	40	VBUS	VSYS	3.3V/5V power supply
GP1	2	GP1	39	VSYS		
GND	3	GND	38	GND	GND	Ground
GP2	4		37	3V3_EN		
GP3	5		36	3V3(OUT)	GP0	TXD 0
GP4	6	GP4	35	ADC_VREF	GP1	RXD 0
GP5	7	GP5	34	GP28	GP4	TXD 1
GND	8	GND	33	GND	GP5	RXD 1
GP6	9		32	GP27	GP15	STATE
GP7	10		31	GP26		
GP8	11		30	RUN		
GP9	12		29	GP22		
GND	13	GND	28	GND		
GP10	14		27	GP21		
GP11	15		26	GP20		
GP12	16		25	GP19		
GP13	17		24	GP18		
GND	18	GND	23	GND		
GP14	19	GP14	22	GP17		
GP15	20	GP15	21	GP16		