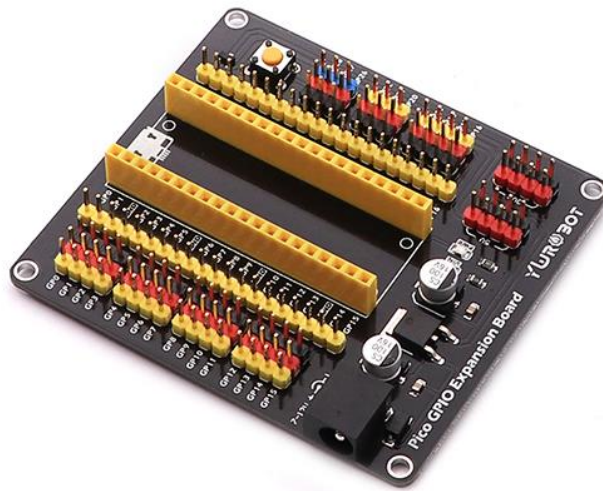


Raspberry Pi

## *Raspberry Pi Module PICO GPIO & Power Supply*

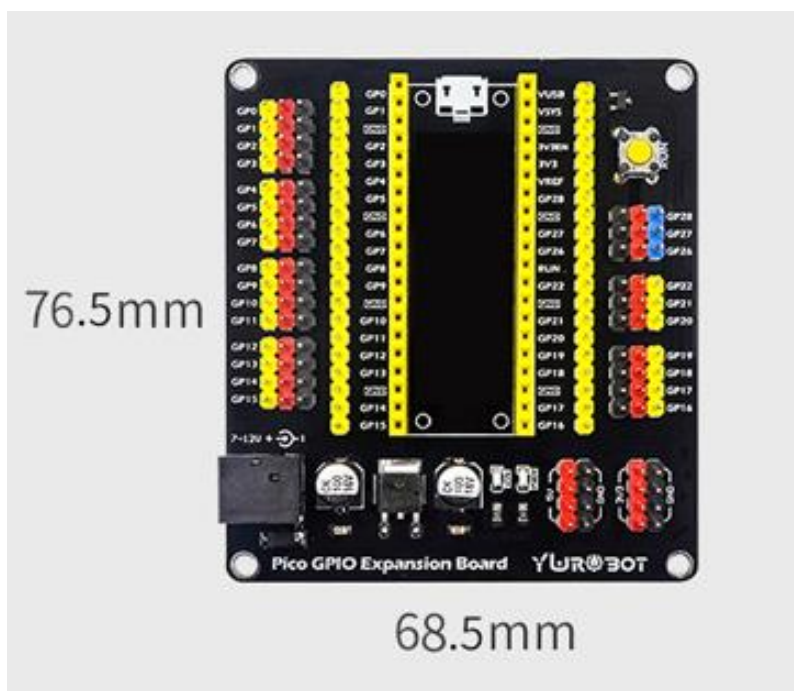


### Descriptions:

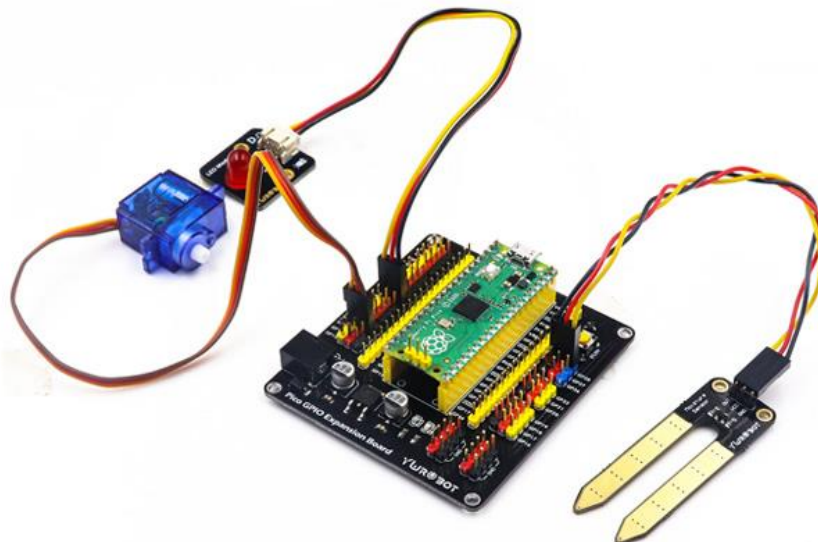
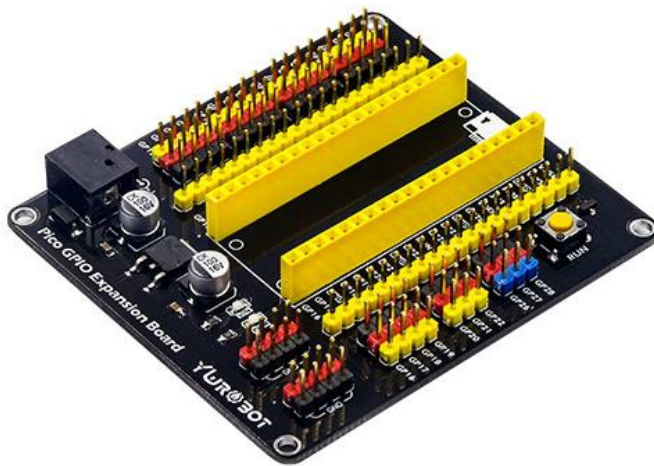
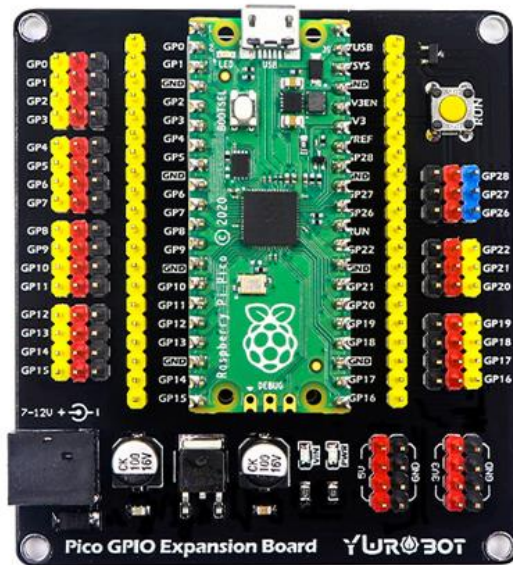
No need to weld all pin leads, support a variety of data protocols, including I2C, UART, analog, digital.

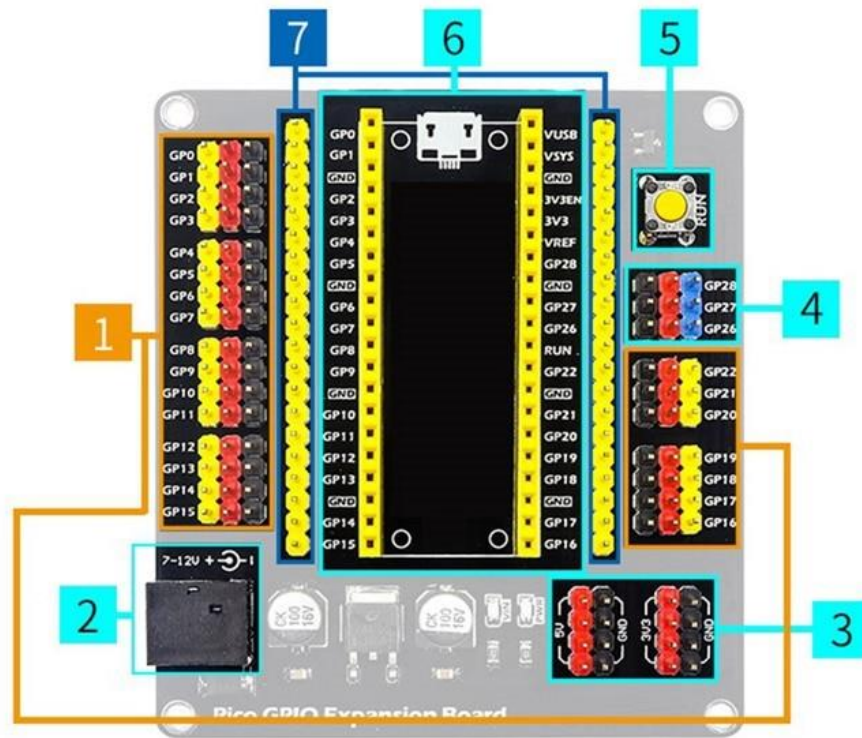
### Specifications:

- Type: Pi Pico GPIO Expansion Board
- Applies to: For Raspberry Pi Pico
- Voltage: 3.3V/5V
- GPIO Level: 3.3V
- Pin: 40 PIN
- Color: Black
- Material: PCB
- Fixing Hole: 3mm
- Size: 76.5 x 68.5mm



**More Detailed Photos:**





1 Digital interface (GP0-GP22)

2 DC2.1 Power interface (7-12V)

3 3.3V-5V power interface

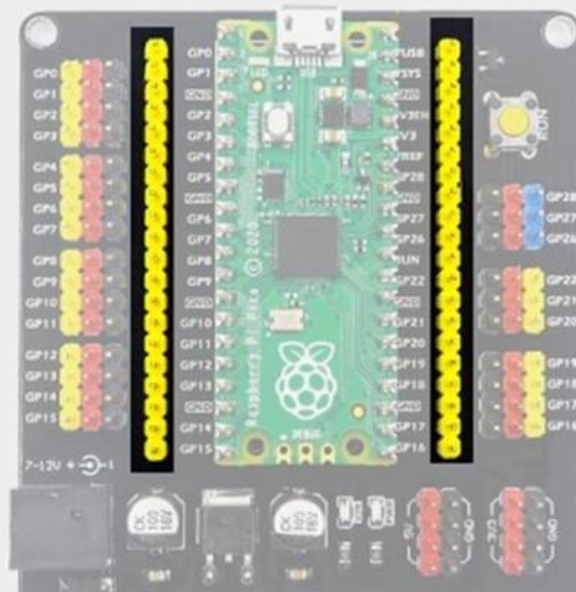
4 Analog interface (GP26-GP28)

5 Reset button

6 Pico motherboard interface

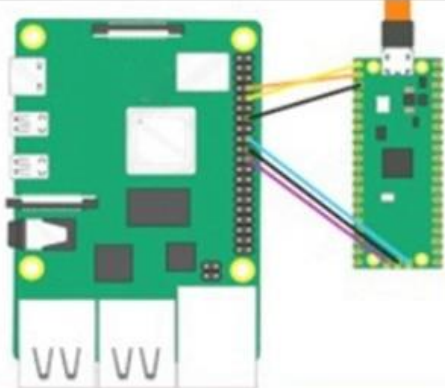
7 GPIO leads to the interface

Not Included Pi Pico  
Motherboard





## Application field



SWD debugging



Rapid prototyping



Wearable devices



Intelligent control

*Made in China*