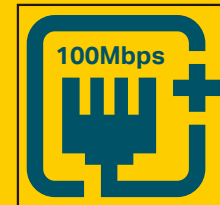




300Mbps Wireless N USB VDSL/ADSL Modem Router



Fast DSL Router
Support 100 Mbps
VDSL Access

TD-W9970



VDSL/ADSL/Fiber/Cable
Compatible



300 Mbps
Wireless Speed



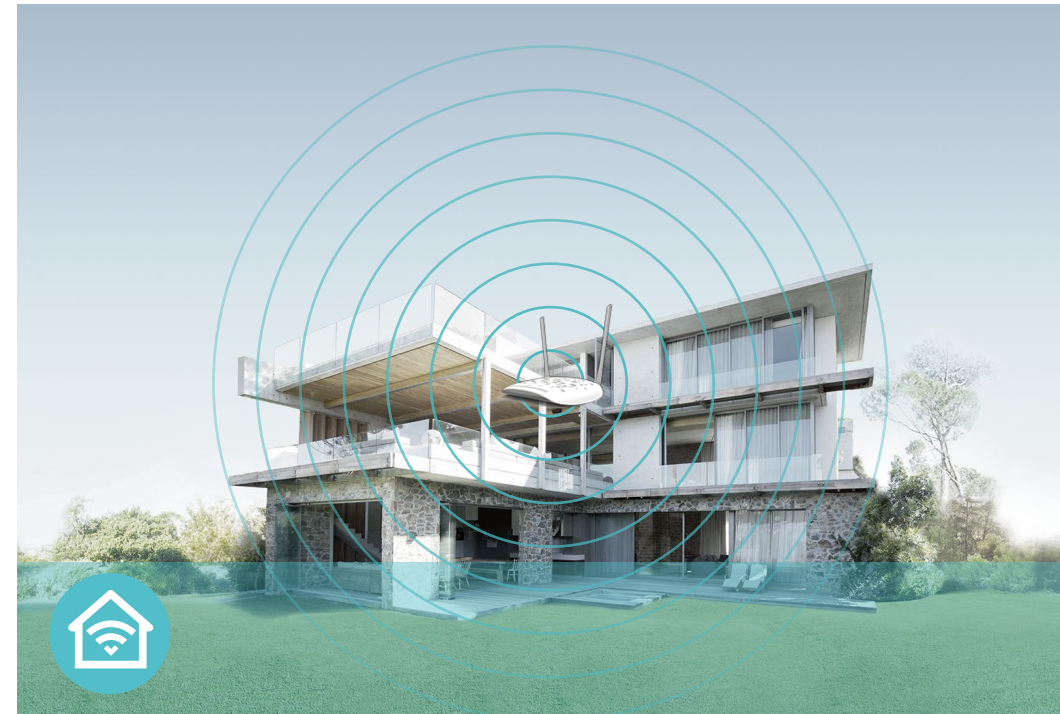
USB 2.0 Port
for 3G/4G Backup Connection

Features



Speed

- **Ultimate Wireless Speed** – Up to 300 Mbps makes it ideal for heavy bandwidth consuming or interruption sensitive applications like online gaming, Internet calls and even the HD video streaming
- **High Speed VDSL** – VDSL Broadband Access of up to 100 Mbps speeds ensures your home internet needs are met



Wi-Fi Range

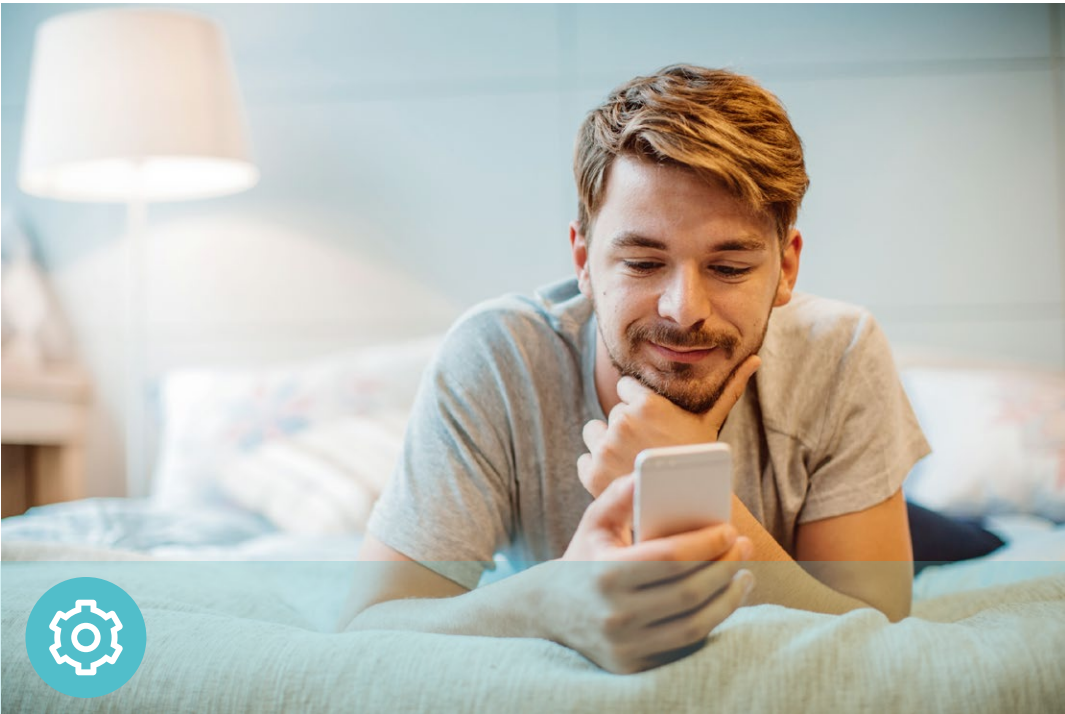
- **Expansive Coverage** – 300 Mbps Wi-Fi allows stable speed for wireless activities, such as streaming, surfing, browsing and posting social media
- **High-gain Antennas** – Two 4 dBi high-gain antennas expand network coverage across your home



Reliability

- **Easy Bandwidth Management** – Assigns your preferred devices with more bandwidth

Features



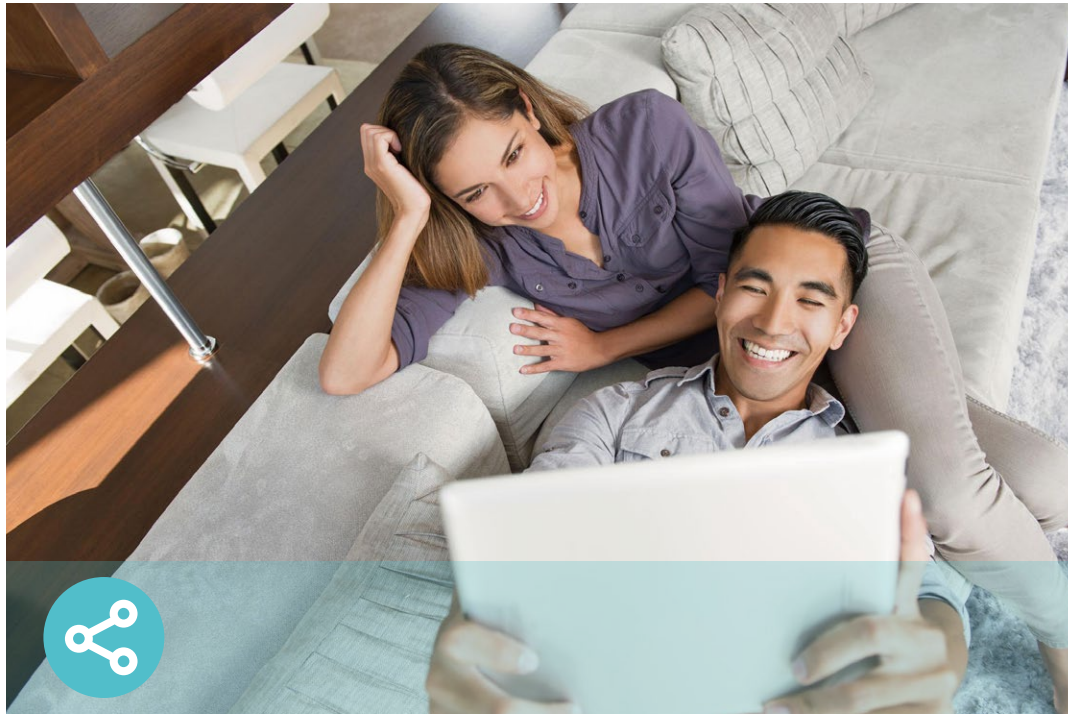
Easy Management

- Intuitive Web UI – Ensures quick and simple installation without hassle
- Hassle-free Management with Tether App – Network management is made easy with the TP-Link Tether App, available on any Android or iOS device
- Remote Management with TP-Link ID – Manage your home network from your smartphone or tablet via a single TP-Link ID, no matter where you find yourself



Security

- Guest Network – Provides separate access for guests while securing the home network
- Parental Controls – Manage responsible internet access for your children
- Encryptions for Secure Network – WPA-PSK/WPA2-PSK encryptions provide active protection against security threats
- VPN Support – Secure access to your home or office network from remote devices
- Firewall – Supports Firewall & Dos Protection , Service Filtering , Access Control , IP & MAC Binding, IPv6 Firewall



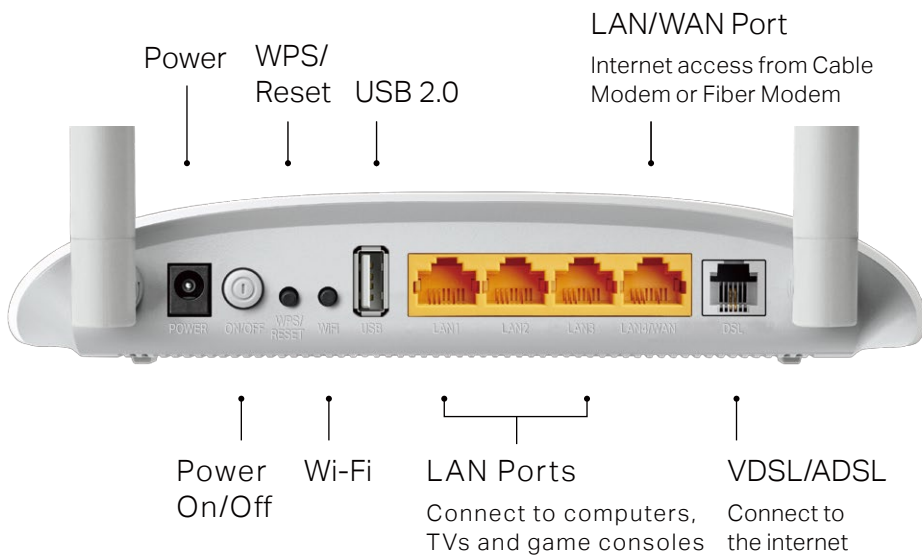
Ease of Use

- Wireless Schedule – Wireless Schedule lets you turn the Wi-Fi radio on or off based on a preset timetable
- Fast Encryption – Easily set up an encrypted wireless connection at a push of the WPS button
- Easy Wi-Fi On/Off – Turn On/Off wireless radio using the Wi-Fi button
- Power On/Off – Conveniently power on or off your router as required

Specifications

Hardware

- Ports: 1 10/100 Mbps LAN/WAN Port, 3 10/100 Mbps LAN ports, 1 RJ11 port, 1 USB 2.0 Port
- Button: WPS/Reset Button, Wi-Fi Button, Power On/Off Button
- Antenna: 2 × 4dBi Fixed Omni-Directional Antennas
- External Power Supply: 9V/0.85A
- Dimensions (W x D x H): 7.7 × 5.1 × 1.4 in. (195 × 130 × 36 mm)
- IEEE Standards: IEEE 802.3, 802.3u
- ADSL Standards: Full-rate ANSI T1.413 Issue 2, ITU-T G.992.1(G.DMT), ITU-T G.994.1 (G.hs), ITU-T G.995.1
- ADSL2 Standards: ITU-T G.992.3 (G.DMT.bis)
- ADSL2+ Standards: ITU-T G.992.5
- VDSL2 Standards: ITU-T G.993.2, ITU-T G.993.5 (G.vector), ITU-T G.998.4 (G.INP)



Wireless

- Wireless Standards: IEEE 802.11b, 802.11g, 802.11n
- Frequency: 2.400 - 2.4835 GHz
- Signal Rate: 300 Mbps at 2.4 GHz
- Transmit Power: <20 dBm(EIRP)
- Wireless Function: Enable/Disable Wireless Radio, WMM, Wireless Statistics
- Wireless Security: Supports 64/128-bit WEP, WPA/WPA2, WPA-PSK/WPA2-PSK encryptions

Specifications

Software

- Operation Modes: DSL Modem Router, 3G/4G Router, Wireless Router
- DHCP: Server, Client, DHCP Client List, Address Reservation, DHCP Relay
- Quality of Service: WMM, Bandwidth Control
- Port Forwarding: Virtual Server, Port Triggering, UPnP, DMZ, Manage Control
- Dynamic DNS: DynDns, NO-IP
- VPN Pass-Through: PPTP, L2TP, IPSec Pass-through
- ATM/PPP Protocols: ATM Forum UNI3.1/4.0, PPP over ATM (RFC 2364), PPP over Ethernet (RFC2516), IPoA (RFC1577/2225), PVC - Up to 8 PVCs
- Security: Firewall & Dos Protection , Service Filtering , Access Control , IP & MAC Binding, IPv6 Firewall
- Management: Remote management, Telnet management, Command Line Interface, SSL for TR-069, SNMP V1/V2C, Web Based Firmware Upgrade,CWMP(TR-069), Diagnostic Tools
- Guest Network: 2.4 GHz Guest Network
- IPSec VPN: Supports up to 10 IPSec VPN tunnels
- Protocols: Supports IPv4 and IPv6

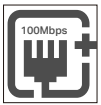
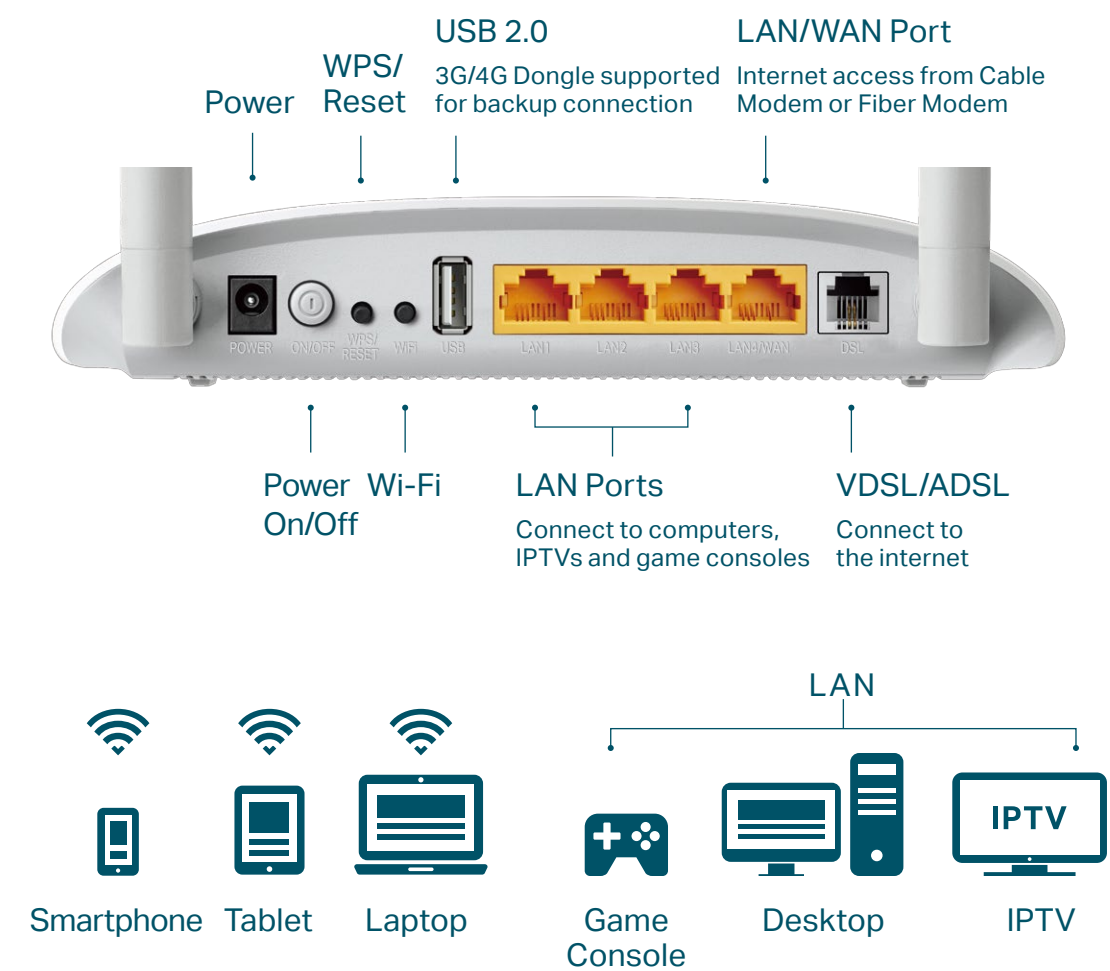
Others

- Certification: CE, RoHS
- System Requirements:
Windows 10/8.1/8/7/Vista/XP or Mac OS or Linux-based operating system
- Environment
Operating Temperature: 0°C~40°C (32°F ~104°F)
Storage Temperature: -40°C~70°C (-40°F ~158°F)
Operating Humidity: 10%~90% non-condensing
Storage Humidity: 5%~90% non-condensing
- Package Contents
DSL Modem Router TD-W9970
External DSL Splitter
RJ11 DSL Cable
RJ45 Ethernet Cable
Quick Installation Guide
Power Adapter

Highlights

Keep Your Home Less Complicated, More Connected

The TD-W9970 is a combined wired/wireless network connection device with an integrated wireless router and VDSL/ADSL modem, reducing the hassle of configuration. For diverse internet access, the LAN/WAN port accepts broadband connections from Cable Modem or Fiber Modem, and a USB 2.0 port shares 3G/4G connections. Featuring a variety of features and rich functionality, the TD-W9970 is the perfect space-saving hub of your home or business network.



High Speed VDSL

- VDSL Broadband Access of up to 100 Mbps speeds ensures your home internet needs are met



Stronger Wi-Fi Across Your Home

- 300 Mbps Wi-Fi allows stable speed for wireless activities, such as streaming, surfing, browsing and posting social media
- Two 4 dBi high-gain antennas expand network coverage across your home



Personalized Security

- Easily set up an encrypted wireless connection at a push of the WPS button
- Parental Controls allow parents to establish regulated access for children



Easy Installation

- An easy setup assistant provides hassle-free installation in seconds
- Integrated mainstream ISP profiles have the most common provider information built into the web UI and Tether. Users simply choose their ISP from a list, enter the username and password, and login is complete.