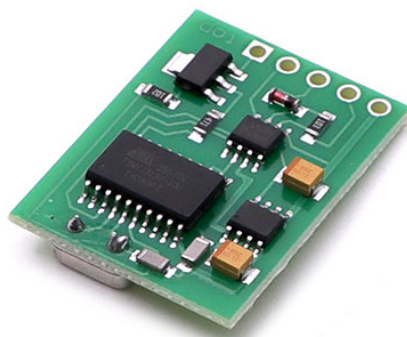


Immobilizer Emulator for Yamaha



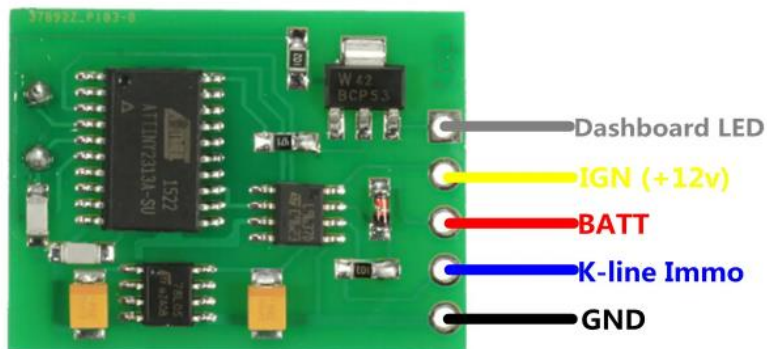
Features:

- Immobilizer simulator for Yamaha bikes, motorcycles and scooters.
- Works with all Yamaha motorcycles and scooters from 2006 to 2009.
- No programming required, but some soldering skills are required to properly wire the wires.
- Emulates a regular Yamaha immobilizer, including a flashing light-emitting security diode on the dashboard.

Installation:

To install the emulator in a normal immobilizer case:

1. Remove the sealing glue from the case of the immobilizer.
2. Take out the PCB from the immobilizer and the desolder from that wire.
3. Connect the emulator according to the drawing below.
4. Insert the emulator into the immobilizer case.



Wire coloring and their designation:

(Wire is not included)

- GND black (there may be 2 black wires in this case connect to both)
- Red Batt (+12v)
- Yellow IGN (+12v)
- Gray LED (+5v)
- Blue K-line Immo-ECU

Made in China