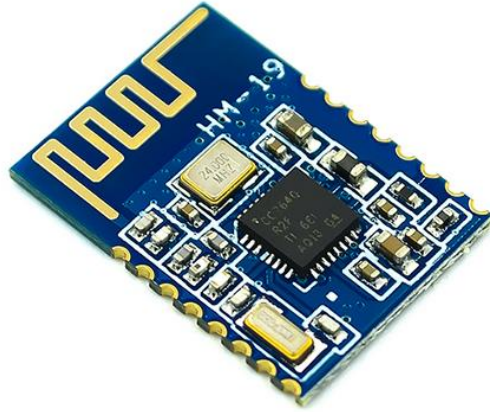


Bluetooth 5.0 Serial Module CC2640R2F

Model: HM-19



Overview:

The HM-19 is an upgraded version of the HM-11. The HM-19 uses TI's CC2640R2F chip as the master IC. Compared to HM-11, HM-19 is a Bluetooth 5.0 BLE module, it has a faster transfer rate and a larger MTU. The AT commands of the HM-19 module are compatible with the AT commands of the HM-11 and HM-10 module.

Features:

- Transparent transmission mode, transparent transmission + remote control dual working mode.
- The main mode supports two working modes: automatic working and manual working.
- Ultra high transmission speed (BLE up to 8KB/s).
- Rich AT commands, support local serial AT commands and remote AT commands.
- Large MTU 253Bytes.
- Support iBeacon function.
- Support firmware upgrade.
- Support 4.2 and 5.0, default 2M bandwidth connection, compatible with 1M bandwidth.

Specifications:

- Chip: TI CC2640R2F
- Bluetooth protocol: 5.0 BLE
- Work voltage (VCC): 3.6V to 6V
- TTL logic level (TX, RX): 3.3V
- Module size: 18.5x13.4mm

Made in China