

Lithium Battery Discharger & Analyzer 200W

Model: SKYRC BD200



Description:

The BD200 is a powerful discharging device that allows the user to discharge a battery at **up to 30 amps** or 200 watts and also measures and compares the performance of batteries. BD200 allows for the precise measurement of battery capacity and takes the guesswork out of choosing the best battery for your application.

The BD200 is much more than a simple battery discharger or a battery load tester. It will test virtually any type or size of battery, any chemistry or number of cells, **up to 35 volts**.

It is small with a high performance cooling system and uses MOS fets from the well-known brand **IXYS**, to make sure it can discharge at **200 watts** continuously.

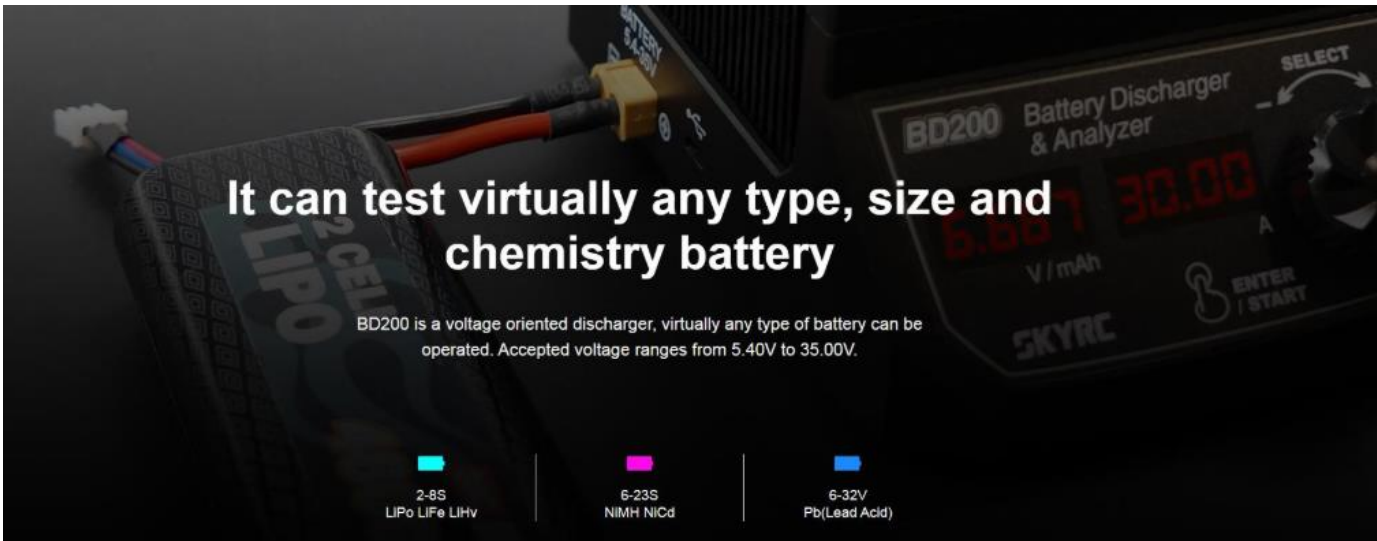
Advantages:

- It displays real time battery voltage, discharged capacity and discharge current.
- It can test battery capacity that helps select batteries with desired capacity.
- It saves time when user wishes to store their large capacity batteries.
- It helps activate the best performance of your batteries for competition.

Specifications:

- Accepted Voltage Range: 5.40-35.00V
- Low Voltage Alert: <5.2V
- High Voltage Alert: >35V
- Max. Discharge Power: 200W
- Discharge Current Range: 0.01A-30.00A
- Current Consumption in Sleep Mode: <100uA
- Standby Current: <=35mA
- Current Display Accuracy: 0.01-10.00A ±60mA; 10.00-30.00A ±2%
- Voltage Display Accuracy: 5.4-10V ±60mV; 10-20V ±120mV; 20-35V ±160mV
- Capacity Display Accuracy: ±3%
- Dimensions: 105mm x 36.6mm x 96mm (Width x Depth x Height)
- Weight: 858g

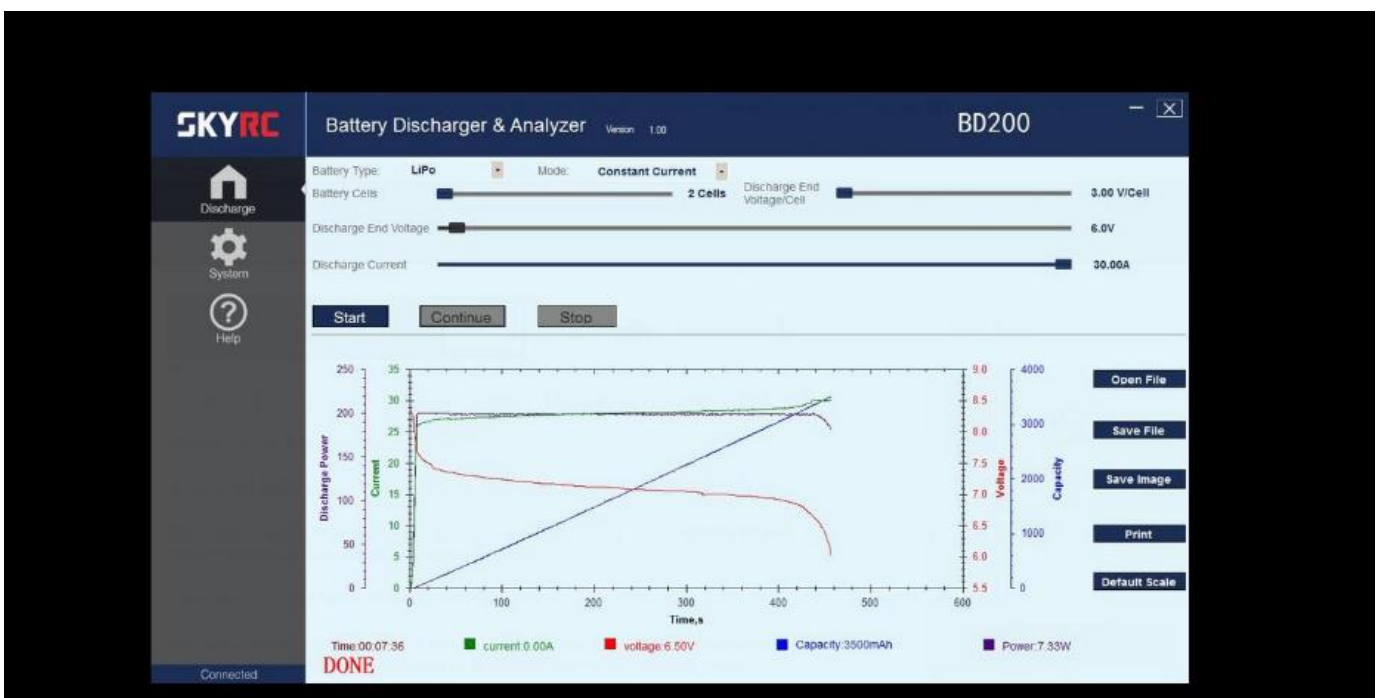
More Product Details:



It can test virtually any type, size and chemistry battery

BD200 is a voltage oriented discharger, virtually any type of battery can be operated. Accepted voltage ranges from 5.40V to 35.00V.

2-8S	6-23S	6-32V
LiPo LiFe LiHv	NiMH NiCd	Pb(Lead Acid)



Easy-to-Use PC Software for Data Analysis

PC software supplied with the BD200 is easy to use, intuitive. There are two discharge mode: 1. Constant Power; 2. Constant Current. The software can automatic sensing of battery cell count and recommends a minimum safe discharge voltage. Discharge tests may be viewed in Amp Hours, Watt Hours or Minutes. Results can be graphed as Voltage vs. Amp hours, Watt hours, Minutes.

Maximum Discharge Power Chart

	No. of Cell	Min. Cut-off Voltage	Storage Voltage	Voltage	Min. Discharge Current (A)	Max. Discharge Current (A)
LiPo	2s	6.0	7.60	8.40	23.80	30.00
	3s	9.0	11.40	12.60	15.87	22.20
LiHV	4s	12.0	15.20	16.80	11.90	16.60
	5s	15.0	19.00	21.00	9.52	13.30
	6s	18.0	22.80	25.20	7.93	11.10
	7s	21.0	26.60	29.40	6.80	9.52
NiMH	8s	24.0	30.40	33.60	5.95	8.33



Made in China