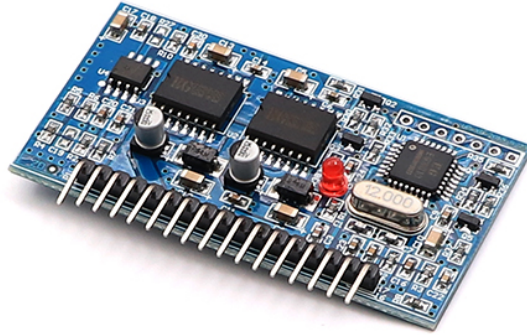


Pure Sine Wave Inverter Driver Board IR2110

Model: EG8010



Description:

EG8010 is a digital, fully functional pure sine wave inverter generator chip with dead zone control. It is applied to DC-DC-AC two-stage power conversion architecture or DC-AC single-stage power frequency transformer boost converter. Architecture, external 12MHz crystal oscillator, can realize pure sine wave 50Hz or 60Hz inverter chip with high precision, distortion and harmonics. The chip adopts CMOS technology and integrates SPWM sine generator, dead time control circuit, amplitude factor multiplier, soft start circuit, protection circuit, RS232 serial communication interface and 128*32 serial LCD driver module.

Features:

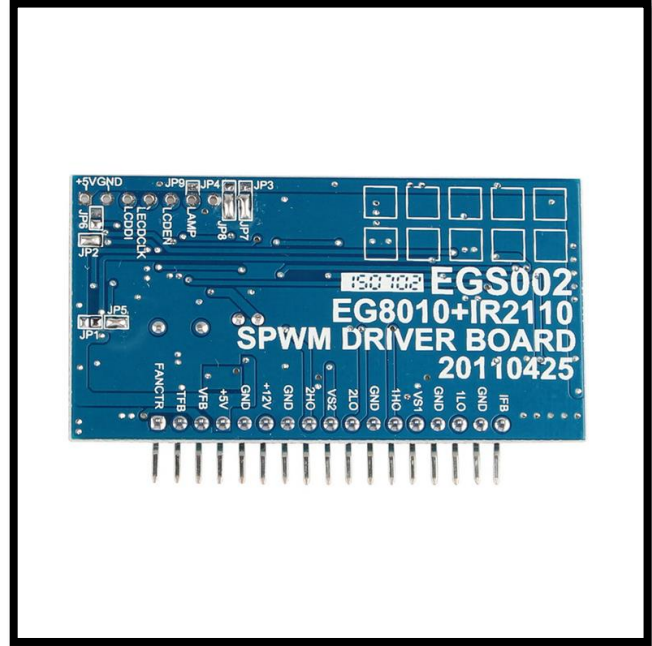
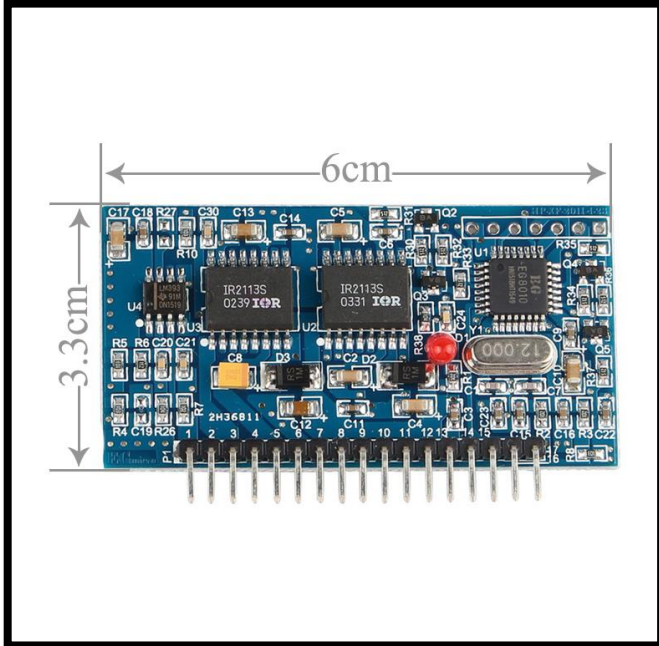
- 5V single power supply
- Pin set 4 kinds of pure sine wave output frequency:
 - 50Hz pure sine wave fixed frequency
 - 60Hz pure sine wave fixed frequency
 - 0-100Hz pure sine wave frequency adjustable
 - 0-400Hz pure sine wave frequency adjustable
- Unipolar and bipolar modulation
- With dead zone control, pin set 4 dead time: 300nS dead time, 500nS dead time, 1.0uS dead time, 1.5uS dead time
- External 12MHz crystal oscillator
- PWM carrier frequency 23.4KHz
- Real-time processing of voltage, current and temperature feedback
- Overvoltage, undervoltage, overcurrent, overheat protection
- Pin setting soft start mode 1S response time
- Serial communication sets output voltage, frequency and other parameters
- External serial port 128*32 liquid crystal display module displays information such as voltage, frequency, temperature and current of the inverter

Application Fields:

- Single-phase pure sine wave inverter
- Photovoltaic inverter
- Wind power inverter
- Uninterruptible power supply UPS system
- Digital generator system

- IF power supply
- Single-phase motor speed controller
- Single phase inverter
- Sine wave dimmer
- Sine wave regulator
- Sine wave generator

[More Detailed Photos:](#)



Made in China