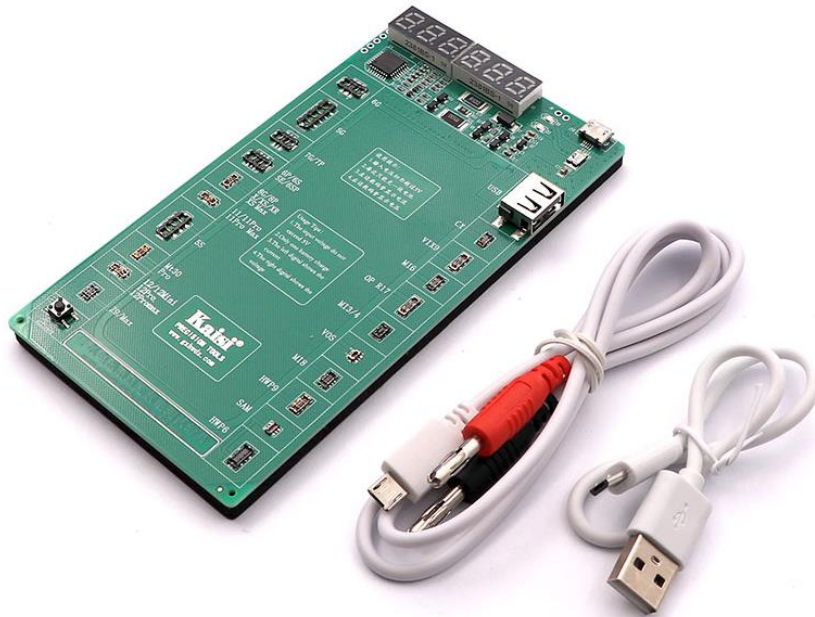


Battery Activation Charge Board Model:K-9208



The Function And Feature Of Kaisi 9208Jig.

The function of Kaisi 9208 jig

- Adopt imported intelligent chip to realize fast charging.
- It has the sleep wake-up function. Press the activation key to activate the battery in sleep. The battery can be used normally again.
- Support other charging equipment to avoid long-term occupation of power meter affecting maintenance work.
- Intelligent automatic identification of positive and negative poles of battery. The positive and negative poles are connected reversely without burning the machine, which can be used directly after being buckled.
- Intelligent charging mode, in line with the lithium battery charging process.
- The whole process of wisdom charge, no artificial guard, full immediately stop charging, do not worry about overcharge caused by danger.
- The battery is full of automatic turning lights, green lights for real charging, full of automatic turning lights.
- Intelligent identification of short-circuit battery, once the short circuit, the red indicator lights up and power off.
- This fixture can work normally only when the input voltage is greater than the current battery voltage, and the maximum charging current is 2A.
- Advanced design, safety, fast charging speed, battery capacity can be charged to 100%, with accurate short circuit judgment ability for you to screen all kinds of bad batteries greatly save your precious time.

The feature of Kaisi 9208 jig

- It can support the model of 5G, 5S, 6G, SE/6P/6S/6S P, 7G/7R 8G/8P/X/X S/XR/XS MAX, 11/11 PRO/ 11 PRO MAX, 12 battery. And Samsung, Mi, Huawei, VIVO, OPPO etc. battery.
- It needs the working voltage over 2.5V to work normally. The maximum charging electric current is 2A.

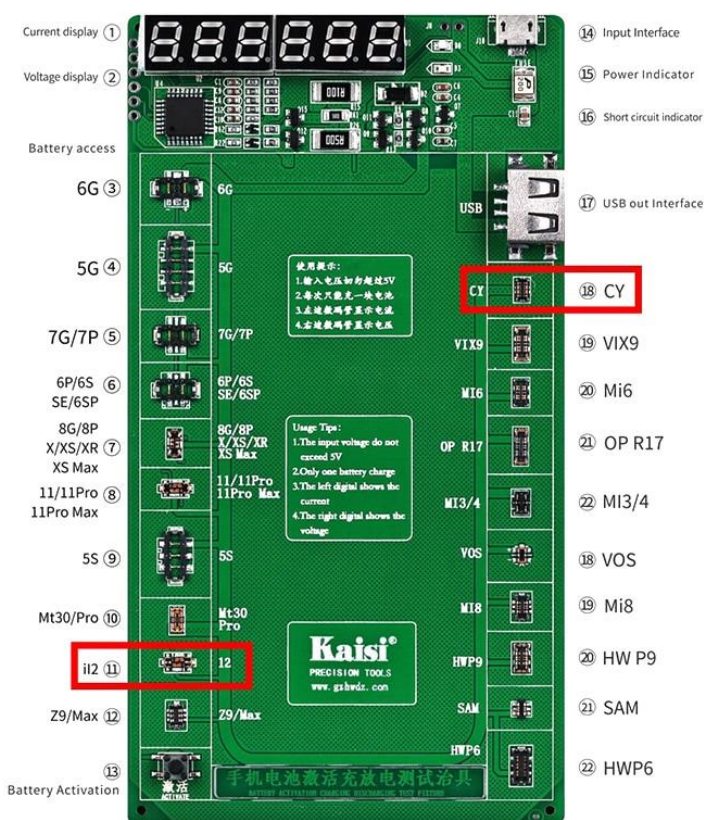
The Description Of Kaisi 9208Jig

Using Instruction Of Specific Function

- Here we start explain the meaning of trickle charging.
- The Way of Trickle Charging: It means turning down the working voltage of input power supply, keeping the charging electric current between 100MA to 200MA.
- Next step, we introduce different functions of Kaisi 9208 jig according to different situation of battery.
- Do not connect the power supply first, and then fasten the battery into the Kaisi 9208 jig, here shows 3 situations:

- Non-reaction of all indicator light of Kaisi 9208 jig means the working voltage is lower than 2.5V. (Kaisi 9208 jig start working condition when the voltage is higher than 2.5V).
- The short circuit indicator lights up, it means the battery is short circuit.
- The indicator of power lights up, and the right-side digital screen shows voltage which is current working voltage of battery.

Before we introduce the details of different function of Kaisi 9208 jig, we show the corresponding relationship of battery voltage and electric quantity according to the experience, following diagram is for reference:



Corresponding Relationship of Battery Voltage and electric Quantity						
Battery Voltage (V)	4.2	3.95	3.85	3.73	3.5	≤2.75
Electric Quantity (%)	100	75	50	25	5	0

Introduction of activation function

Some battery will enter dormant status because of putting away for a long time or lower electric quantity, it works normally after activation.

The green indicator light will light up normally when connecting the power supply with Kaisi 9208 jig correctly, and adjusting the working voltage between 3.0V to 3.5V, this is a self-inspection function of Kaisi 9208 jig. Kaisi 9208 jig will activate most battery automatically when fastening the battery into Kaisi 9208 jig, this is a automatic activated function of Kaisi 9208 jig. Here are 3 situations of battery for reference:

- The digital screen of Kaisi 9208 jig shows voltage of battery after fastening the battery into Kaisi 9208 jig, it means the battery is already activated with voltage output because of the voltage of battery is bigger than the power supply voltage. Kaisi 9208 jig with the function of automatic activation will start activation mode acquiescently, please charging normally after battery activation.
- The digital screen shows that the voltage is a little less than input voltage (about 0.2-0.5) after fastening the battery into Kaisi 9208 jig, it means that the battery can not be activated automatically because the battery is without any voltage output, it needs to press the button of [Battery Activation) to start activation mode. The digital screen should show the output of battery if the battery is activated successfully. At this moment, the voltage showing in digital screen is bigger than input voltage, so please charge the battery normally (The following instruction of charging function is for reference.)
- The voltage is a little less than the input voltage when fastening the battery into Kaisi 9208 jig, and if there is still nothing changing in the digital screen, we can judge that this battery is damaged. (The universal problem is the battery PCB small plate is damaged, please change the battery PCB small plate to solve the problem.)

Instruction of charging function

The digital screen can show the voltage of battery if we fasten the battery into Kaisi 9208 jig before connecting the external power supply with Kaisi 9208 jig, we can introduce the charging function of Kaisi 9208 jig in 2 different situations.

- The voltage of battery is higher than 3V.
When the right digital screen shows the voltage is higher than 3V after fastening the battery into Kaisi 9208 jig, please connect the power with power supply and Kaisi 9208 jig correctly, and adjust the input power supply into Kaisi 9208 jig in order to adjust the charging eclectic current according to your needs, than charge the battery normally after last step. This is a fast and effective charging way; the maximum charging electric current is up to 2A.
- The voltage of battery is lower than 3V.
The right side digital shows the voltage is lower than 3V or non-reaction (The reason of non -reaction is the voltage of battery is lower 2.5V) after fastening the battery into Kaisi 9208 jig. It cannot use the high voltage to charge battery directly when the battery voltage is lower than 3V. It needs to charge 1-2 minute by the way of trickle charging. Please connect the power supply and Kaisi 9208 jig correctly, and adjust the voltage between 3.0 to 3.5V to keep the charging electric current in the range of 100 to 200mA., this step makes the battery recover slowly.

Most of dormant battery can be activated automatically, please press the button of [Battery activation] to activate the battery if some battery cannot be activated automatically. We can judge that the battery is damaged if there is still non-reaction after pressing the button of Battery activation]. Above mentioned of activation function is for reference.

Instruction of over current production function

- The maximum charging electric current is 2A. Kaisi 9208 jig will start protection mode automatically to avoid some damaging of battery because of faulty operation. The charging electric current will lower suddenly when the electric current is over 2A, this is what we can know from left side digital current. This is a limit for electric current input of power supply to avoid the faulty operation and protect the battery at the same time.
- Kaisi 9208 jig needs about 30s to cool down after over current protection because charging by high eclectic current will cause exothermic reaction, please charge sequentially after 30s.

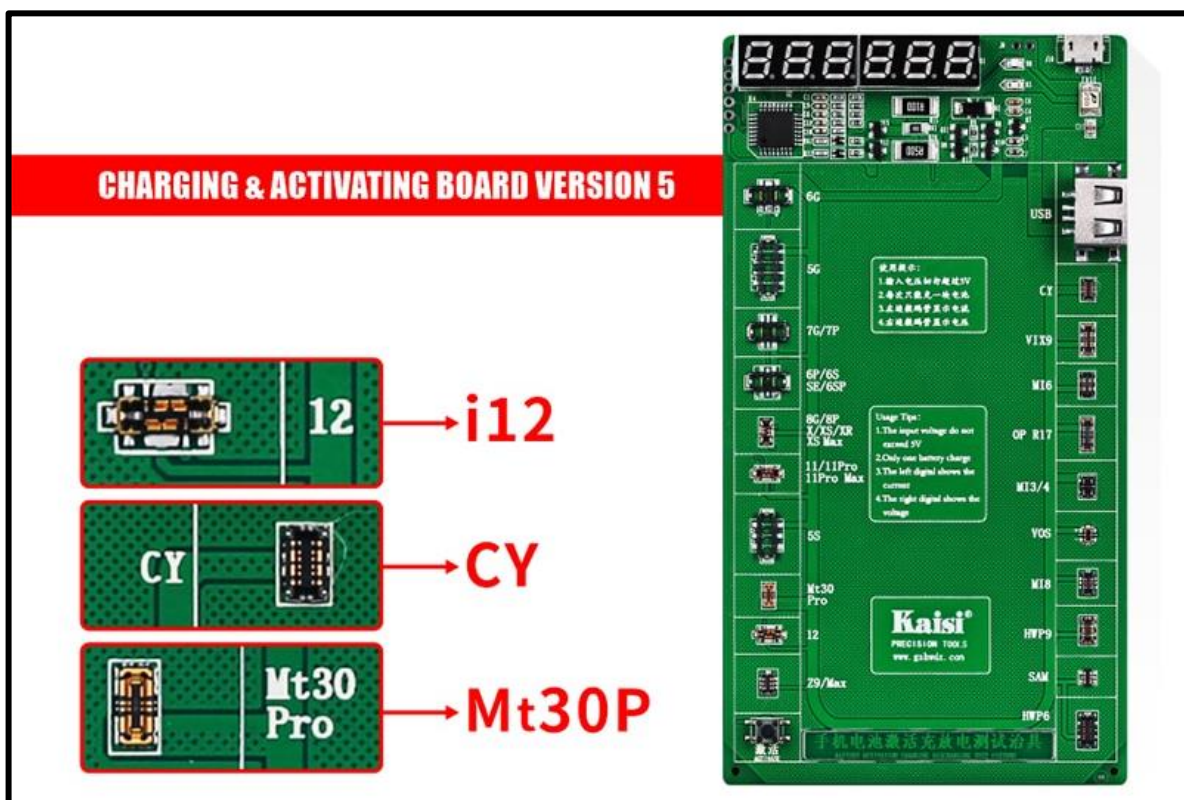
Instruction of short circuit testing function

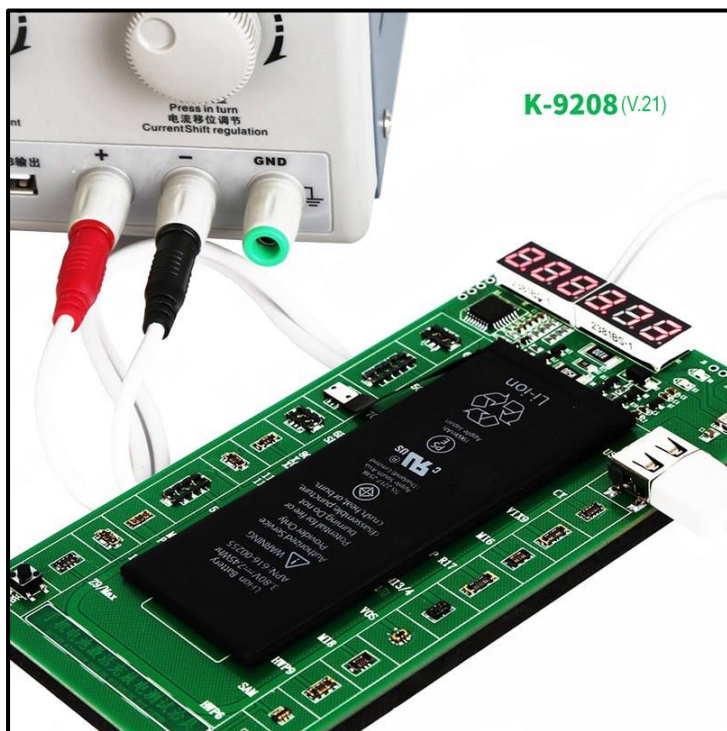
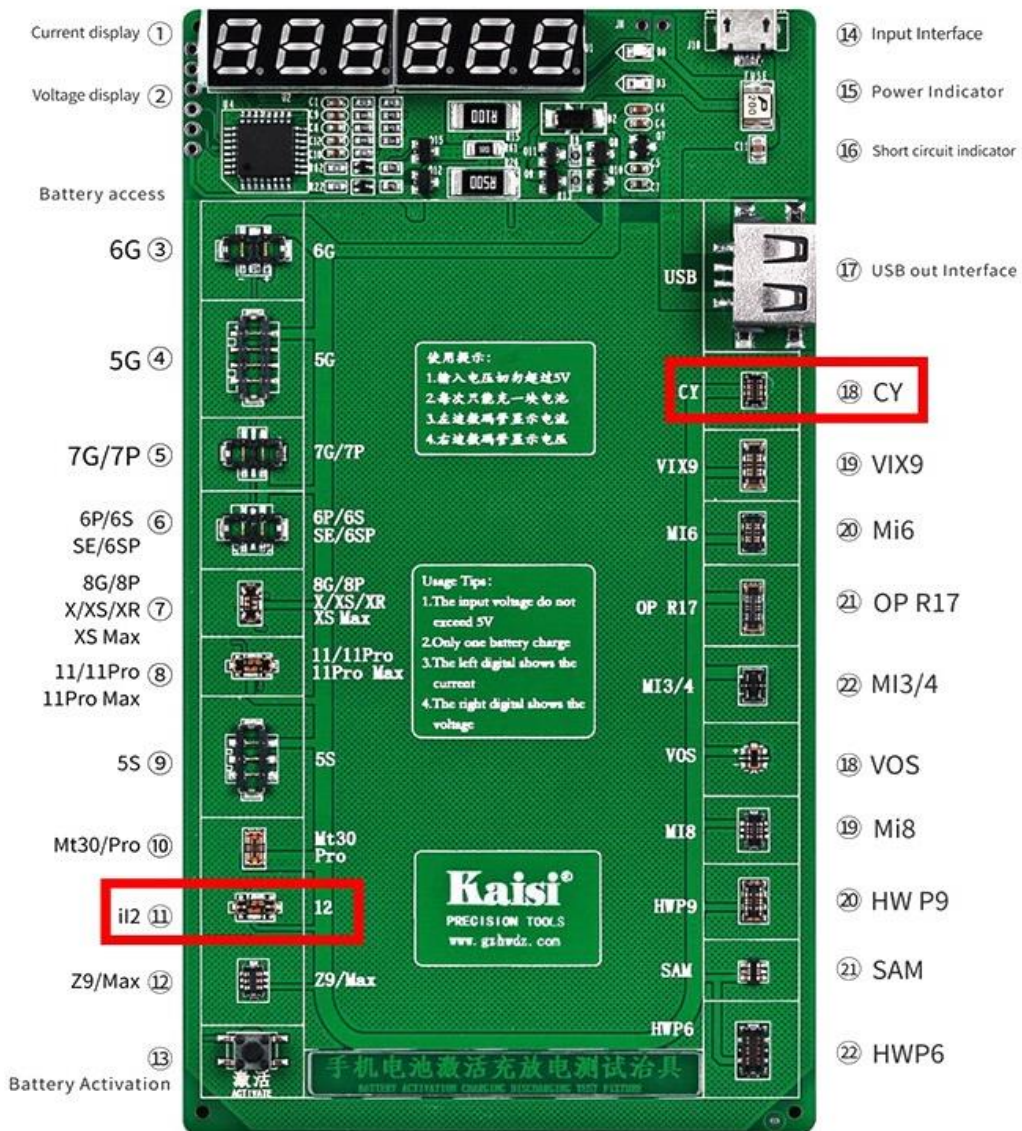
- When the right-side short circuit indicator lights up after fastening the battery into Kaisi 9208 jig, besides, digital screen and green working indicator stop working, it means this battery is short circuit.

Package:

- 1 x battery charge activation board
- 1 x Power cable (for connecting DC power supply)
- 1 Micro USB cable (random color)

More Detailed Photos:





Made in China