

QA(13) - Series Miniature Circuit Breakers



Mini Rail Mount
1 pole



Mini Rail Mount
2 pole



Mini Rail Mount
3 pole



Mini Rail Mount
3 + N

Features

- AC Circuit Breaker
- Hydraulic-Magnetic technology
- 100% rating capability, independent of ambient temperature
- VC 8036 compliant (SANS 556-1)
- VDE approved, CE certified
- Ratings 5 to 60 A (subject to certification)
- Precision tripping characteristics
- Ultra compact – 13 mm wide module
- Trip indication with mid-trip position
- Reset immediately after overload
- Mini Rail Mount product in black shells
- Suitable to use for electrical isolation
- Shell designed for easier installation onto busbar

Applications

- AC branch circuit protection (IEC / EN 60947-2)
- Switch Disconnecter (IEC / EN 60947-3)
- Telecom / datacom equipment
- Lighting control
- UPS equipment
- Alternative energy equipment
- Mobile power generation equipment
- Railway signalling equipment
- Residential equipment
- Industrial equipment

Auxiliary Switch, Trip Alarm & Combo: Features

- Auxiliary Switch
- Auxiliary Switch + Trip Alarm
- Trip Alarm
- AC and DC voltages
- UL 489 listed (Auxiliary Switch: 6 A 250 V AC, 0.5 A 80 V DC)
- IEC 60947-5-1 approved (Auxiliary Switch: 6 A 240 V AC, 0.5 A 110 V DC; Trip Alarm: 6 A 240 V AC, 0.5 A 110 V DC)
- Factory fitted
- Attached to right hand side of Circuit Breaker
- Compact 6.5 mm width

Optional Accessories

- Handle lock
- Surface mounting clips
- Busbar
- Escutcheon blank
- Safety blank

QA(I3) - Series Miniature Circuit Breakers

Technical Data

Product Type	Circuit Breaker				
Approvals	VC 8036 (SANS 556-1)				
Number of Poles	I	2 (I+N)	2	3	4 (3+N)
Operating Voltages	240 V AC			415 V AC	
Minimum Current Rating	5 A			5 A	
Maximum Current Rating	60 A			50 A	
Interrupting Capacity	2.5 kA				

Product Type	Circuit Breaker				
Approvals	IEC / EN 60947-2, VDE				
Number of Poles	I	2 (I+N)	2	3	4 (3+N)
Operating Voltages	240 V AC		415 V AC		
Minimum Current Rating	5 A				
Maximum Current Rating	50 A				
Interrupting Capacity	3 kA				

Product Type	Switch Disconnecter			
Approvals	SANS 60947-3			
Number of Poles	I	2	3	4
Operating Voltages	240 V AC	415 V AC		
Current Rating	63 A			

Description	
Operating Temperature Range	-40 °C to +85 °C
Mounting Options	Mini Rail, surface mount
Time Delay Curves	3

Breaker QA	Wire Size mm ² (IEC)	Torque (IEC)	Comments
I Pole to 4 Pole	0.75 - 35 mm ²	2.5 Nm	Pozidriv #2 Combi head

QA(13) - Series Miniature Circuit Breakers

Long Code

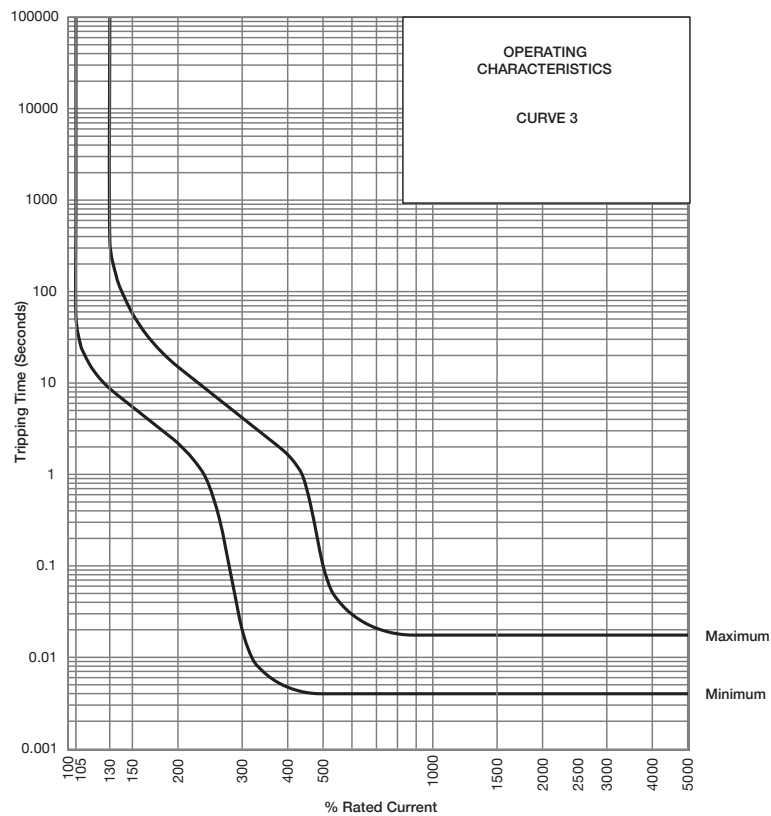
Example Code: QA----3(13)-MR-3-15A-----

Group	1	2	3	4	5	6	7	8	9	10	11
Requirement	QA Frame	Switch / Neutral	Auxiliary + Trip Alarm	Triple pole	13 mm module width	Mini Rail	Short delay curve 3	Current Rating 15 A	Future use	Shunt Trip	Future use
Long Code	QA	-	-	3	(13)	MR	3	15A	-	-	-

Group 1: Frame Type	Code	Description	Comments
	QA	13 mm wide Miniature Circuit Breaker	
Group 2: Switch/Neutral	Code	Description	Comments
	-	Not applicable	Overload poles do not have any further coding
	S	Switch	Green handle
	N	Neutral	
Group 3: Auxiliary	Code	Description	Comments
	-	Not applicable	Use this code if no Auxiliary used
	A	Auxiliary Switch (1 x Aux in 1 module)	6.5 mm module fitted on right-hand side
	T	Trip Alarm (1 x Trip Alarm in 1 module)	6.5 mm module fitted on right-hand side
	AT	Auxiliary Switch + Trip Alarm combo (combined in 1 module)	6.5 mm module fitted on right-hand side
Group 4: No of Poles	Code	Description	Comments
	1	Single pole	
	2	Double pole	2 pole or 1+N
	3	Triple pole	
	4	Four pole	4 pole or 3+N
Group 5: Module Width	Code	Description	Comments
	(13)	13 mm module width	
Group 6: Mounting	Code	Description	Comments
	MR	Mini Rail Mount	Mini Rail Mount supplied in black body only - 57 mm Escutcheon
	DM	Dual Mount	Dual Mount supplied in black body only - 57 mm Escutcheon
Group 7: Time Delays	Code	Description	Instantaneous Trip Point (x In) Comments
	3	Short time delay	3 – 5 White handle
Group 8: Current Ratings	Code / Description		Comments
	5, 10, 15, 16, 20, 25, 30, 35, 40, 45, 50, 60 A		Ratings available vary depending on certification * Other ratings are available as special orders. Check availability.
Group 9:	Code	For future use (-)	
Group 10: Shunt Trip	Code	Description	Comments
	-	Not applicable	Use this code if no Shunt Trip is used
Group 11	Code	For future use (-)	

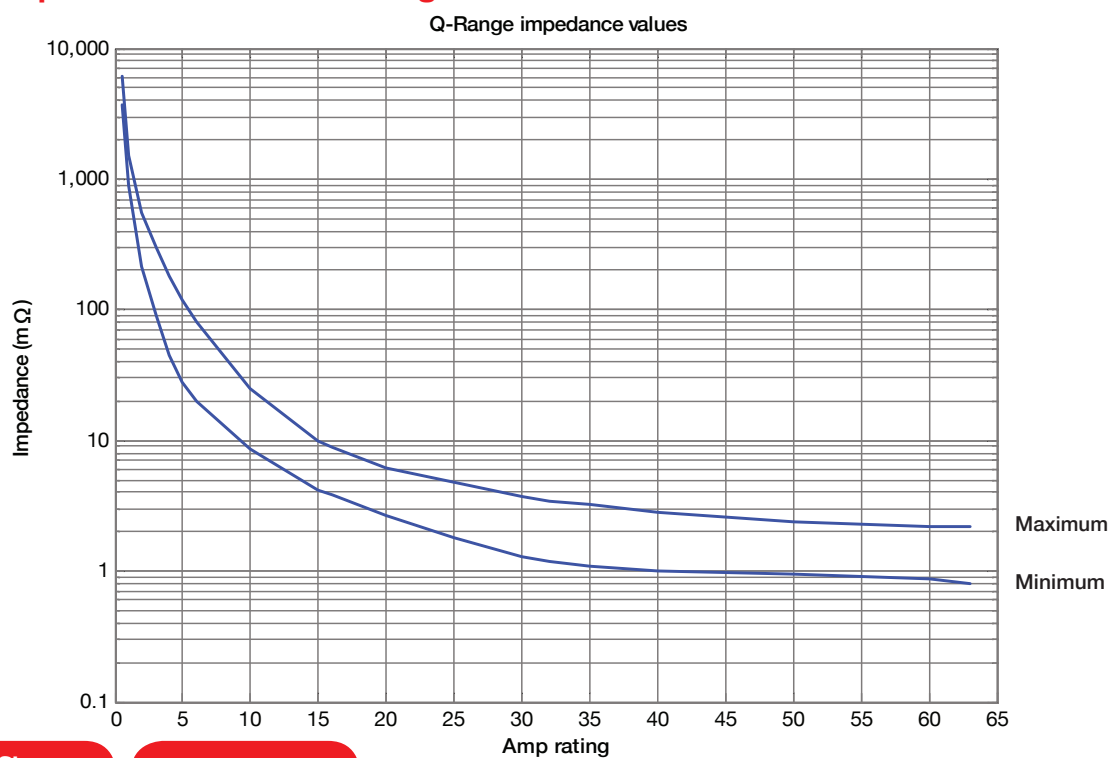
QA(I3) - Series Miniature Circuit Breakers

Time Delay Curves



* The published time delay curves are generated at 30°C ambient temperature with the Circuit Breaker mounted in the up-right position. The “must hold”, “must trip” and “instantaneous trip” current values are not affected by temperature, although delay time for the other operating current values may have to be adjusted using the temperature compensation curve which is available on request.

Internal Impedance vs Current Rating



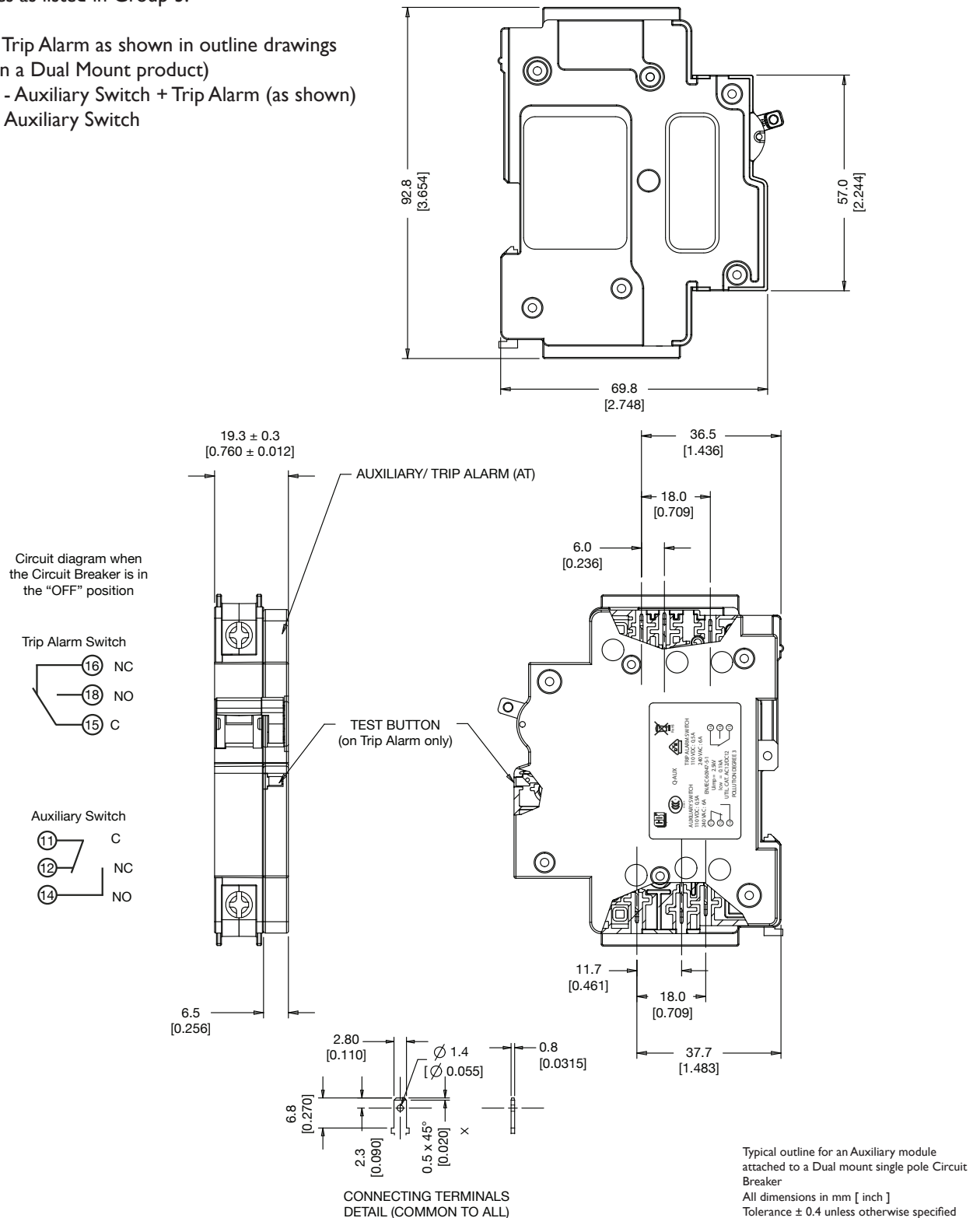
QA(13) - Series Miniature Circuit Breakers

Typical outline of Auxiliary Switch / Trip Alarm

Auxiliary available (6.5 mm module width) to match the unit to which it is attached.

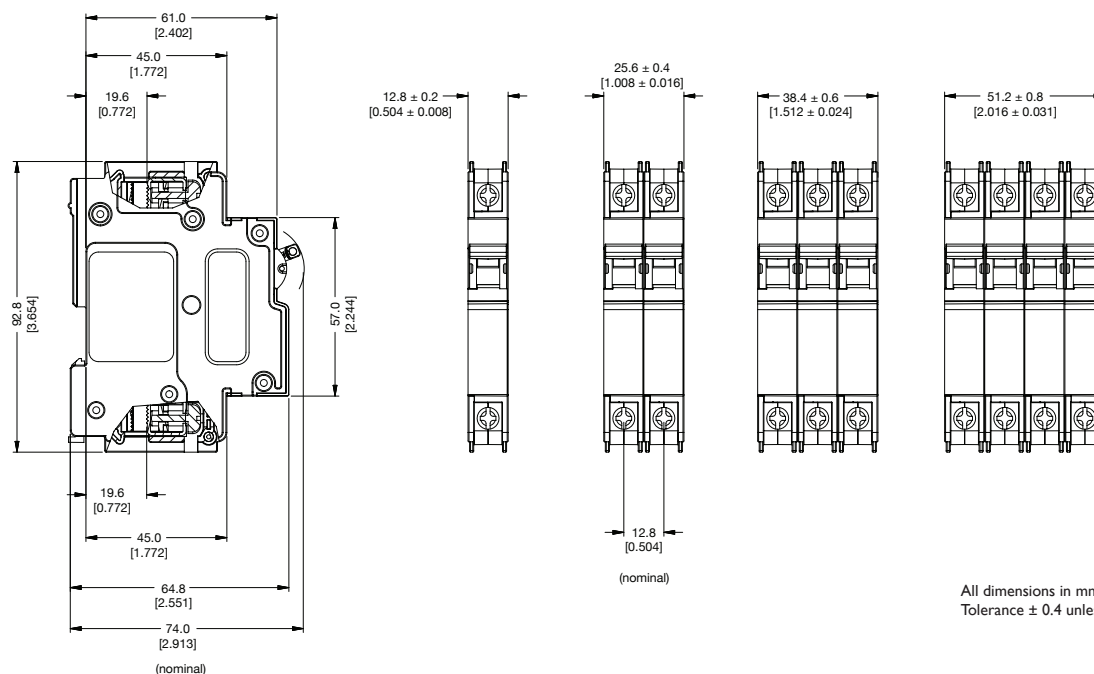
Available types as listed in Group 3:

- Type T - Trip Alarm as shown in outline drawings (fitted on a Dual Mount product)
- Type AT - Auxiliary Switch + Trip Alarm (as shown)
- Type A - Auxiliary Switch



QA(13) - Series Miniature Circuit Breakers

Outline Dimensions: Mini Rail



Made in Lesotho