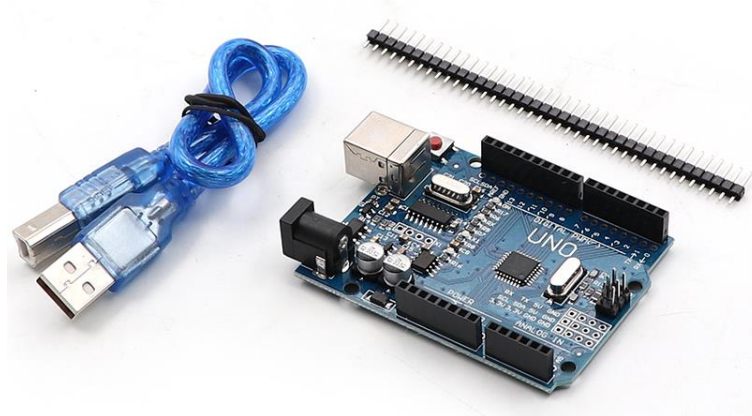


# Arduino UNO SMD ATmega328

## Model: UNO R3



### Description:

The Uno R3 SMD is a Uno compatible version of the latest R3 iteration of the Arduino Uno, which is the most popular of the many development boards available for hobbyists. It uses an SMD version of the microprocessor rather than the older style DIP package used on the original product.

The Uno R3 SMD operates at 5V which can be supplied via an external power supply or through the USB port connection. The power source is selected automatically if both are available. If an external supply is used, it is recommended to use a supply between 7-12V. Higher input voltages will cause the on-board regulator to work harder and may cause it to overheat. Our 7.5V AC adapter works extremely well for powering these boards.

### Features:

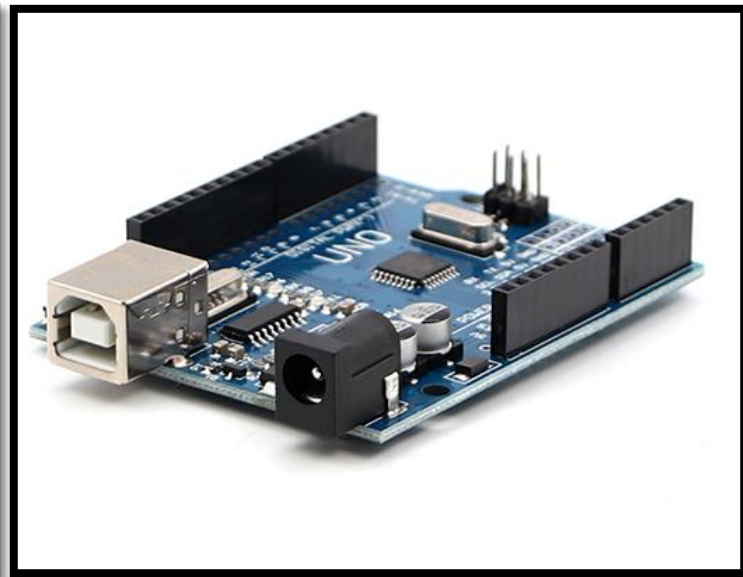
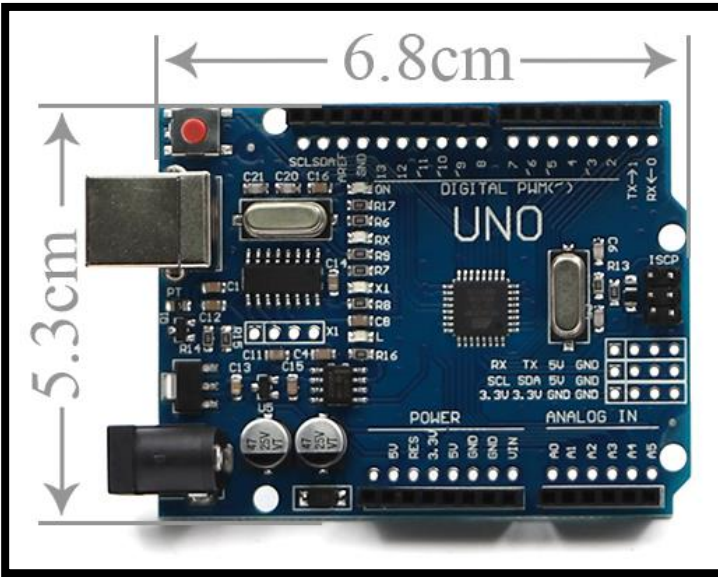
- ✓ ATmega328 processor running at 16MH.
- ✓ CH340 Serial to USB converter.
- ✓ 32KB Flash memory.
- ✓ 14 Digital I/O.
- ✓ 6 PWM shared with the digital I/O.
- ✓ 6 Analog inputs that can also be used as digital I/O for a total of up to 20 digital I/O.
- ✓ 1 Hardware serial port.
- ✓ 5V operation

### Specifications:

- ❖ Microcontroller: ATmega328
- ❖ Serial to USB Converter: CH340
- ❖ Operating Voltage: 5V
- ❖ Input Voltage: 7-12V
- ❖ Digital I/O Pins: 14
- ❖ PWM I/O Pins (Shared with Digital I/O): 6
- ❖ Analog Input Pins: 6
- ❖ DC Current per I/O Pin: 20mA

- ❖ DC Current which can be drawn from 3.3V Pin: 50mA
- ❖ Flash Memory: 32 KBytes
- ❖ SRAM: 2 KBytes
- ❖ EEPROM: 1 KBytes
- ❖ Clock Speed: 16MHz
- ❖ Built-in LED: Attached to digital I/O Pin 13
- ❖ USB Connector Style: B-Type Female
- ❖ Size: 6.8x5.3cm

More Detailed Photos:



*Made in China*