



## Arduino UNO+WIFI R3 ATmega328P+ESP826



### Description:

Full integration on one board: Uno R3 ATmega 328 and WiFi ESP8266 with memory 32Mb. All of the modules can work together or each separately. And everyone has their own pinout headers.

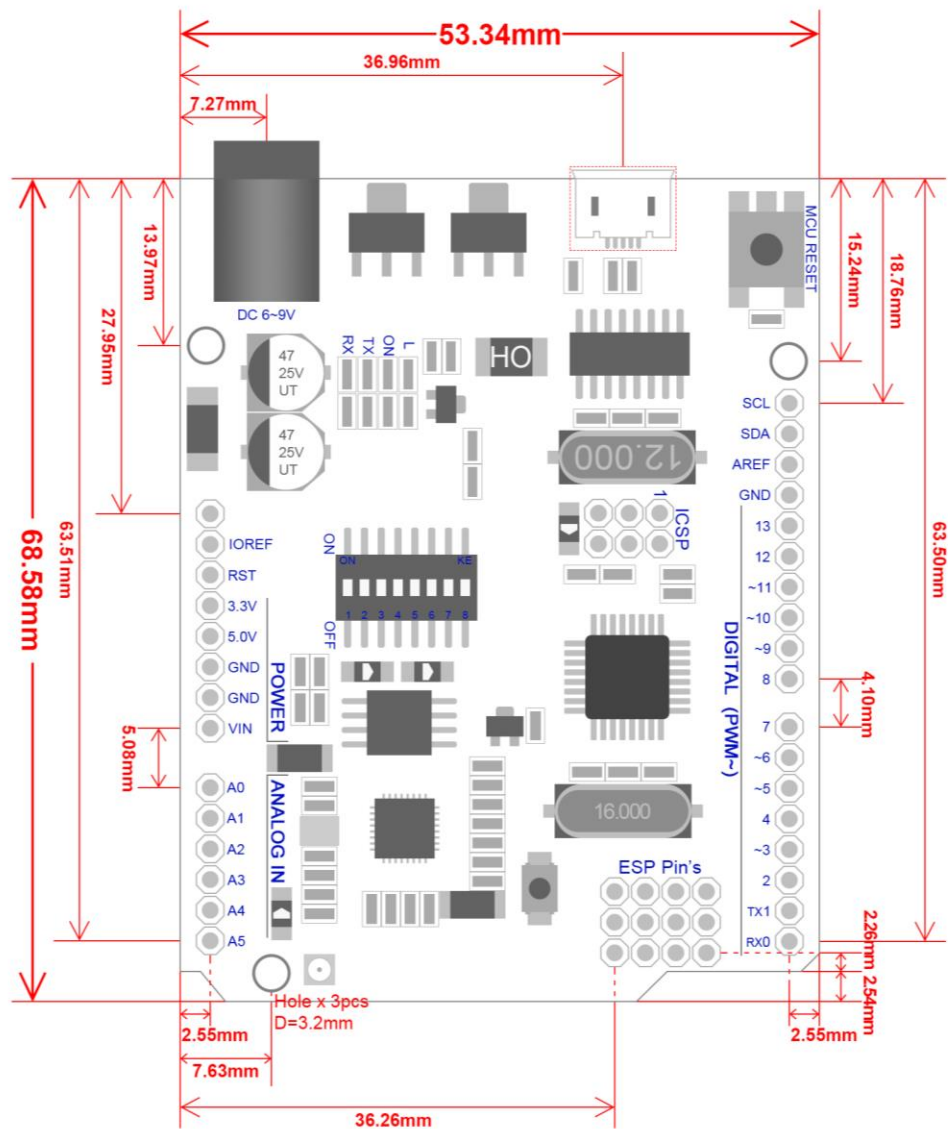
The convenient solution for the development of new projects requiring Uno and WiFi.

Via USB you can update sketches and firmware for ATmega328 and for ESP8266. The board has the USB-serial converter CH340G. It has DIP-switch, to connect the modules. For example, to: USB and ATmega328, USB and ESP8266, ATmega328 and ESP8266.

### Specifications:

Microcontroller	ATmega328
IC Wi-Fi	ESP8266
USB-TTL converter	CH340G
Power output	5V-800mA
Power IN. USB	5V (500mA max.)
Power IN. VIN/DC Jack	9-24V
Power consumption	5V 800mA
Logic level	5V
WiFi	Wi-Fi 802.11 b/g/n 2.4GHz
USB	Micro USB
Clock frequency	16MHz
Operating supply voltage	5V
Digital I/O	14
Analog I/O	6
Memory size	32Mb
Interface Type	Serial/OTA
Operating temperature	-40°C~+125°C
Dimensions (LxW)	53.34x68.58mm
Weight	8g
Antenna	Built-in/external antenna

## Dimensions Diagram:



*Made in China*