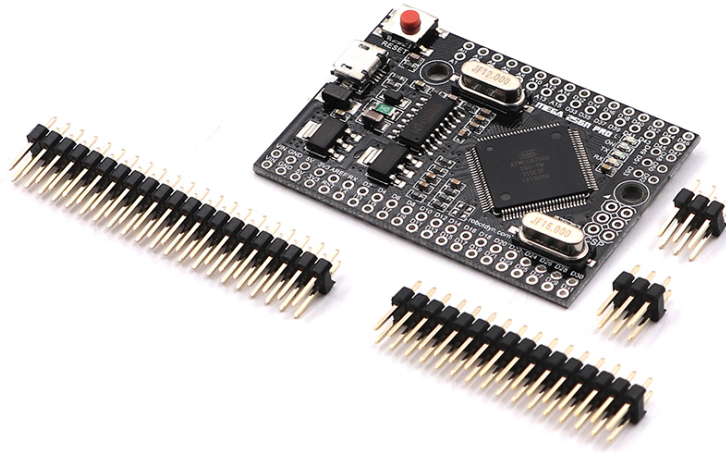




ARDUINO MEGA 2560 PRO CH340

Model: MEGA-PRO-CH340G/ATmega2560



Description:

The Mega Pro Embed CH340G / ATmega2560 board is based on the ATmega2560 microcontroller and the USB-UART adapter CH340. The board is compatible with Arduino Mega 2560. The board has a compact form factor of 38x55mm and is an excellent solution for developing projects based on ATmega2560.

The Mega Pro Embed functionalities are identical to the Arduino Mega 2560. Even though it is an Embed board, it is solid stable as the Mega Board. It uses the original chip, and a 16 MHz high-quality quartz resonators is present on the board.

The board has a Micro USB connector that allows you to connect the microcontroller to the computer via the USB-UART adapter CH340 (A driver installation may be required).

The board can be powered directly through the Micro USB connector, or via the corresponding contact on the board (Vin). The used voltage regulator operates in a range of 6 to 9V DC.

The maximum output current upon 5V is around 800mA, while on the 3.3V it is about 800mA.

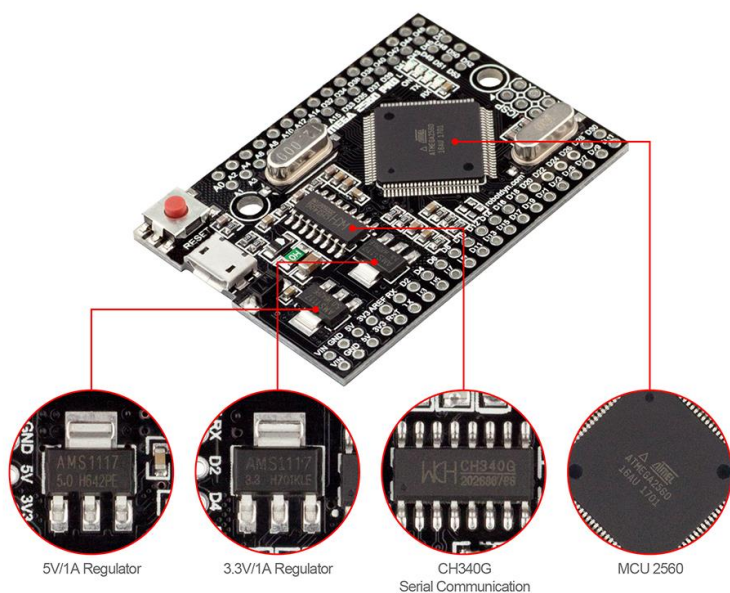
The voltage regulator allows to use up to 18V as an input value, however we do not recommend exceeding the recommended values aforementioned, since this can lead to excessive heat and damage the device.

Specifications:

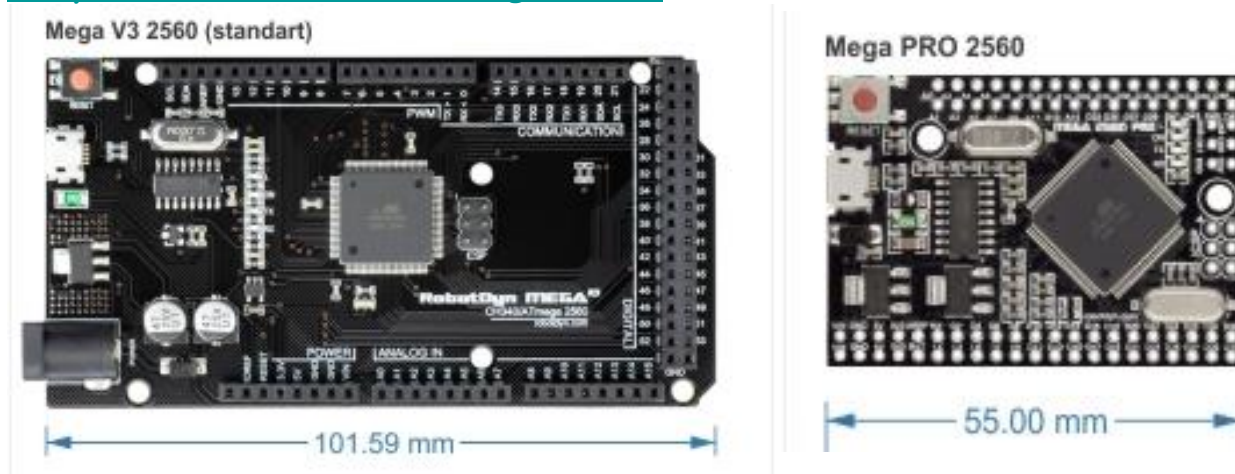
Microcontroller	Atmel ATmega 2560 (16 MHz), AVR
USB-TTL converter	CH340
Power Out	5V-800mA 3.3V-800mA
Power IN. USB	5V (500mA max.)

Power IN. VIN/DC Jack	6-9V (peak 12V)
Power Consumption	20mA
Logic level	5V
USB	Micro USB
PCB Size	38×54mm
Weight	15g

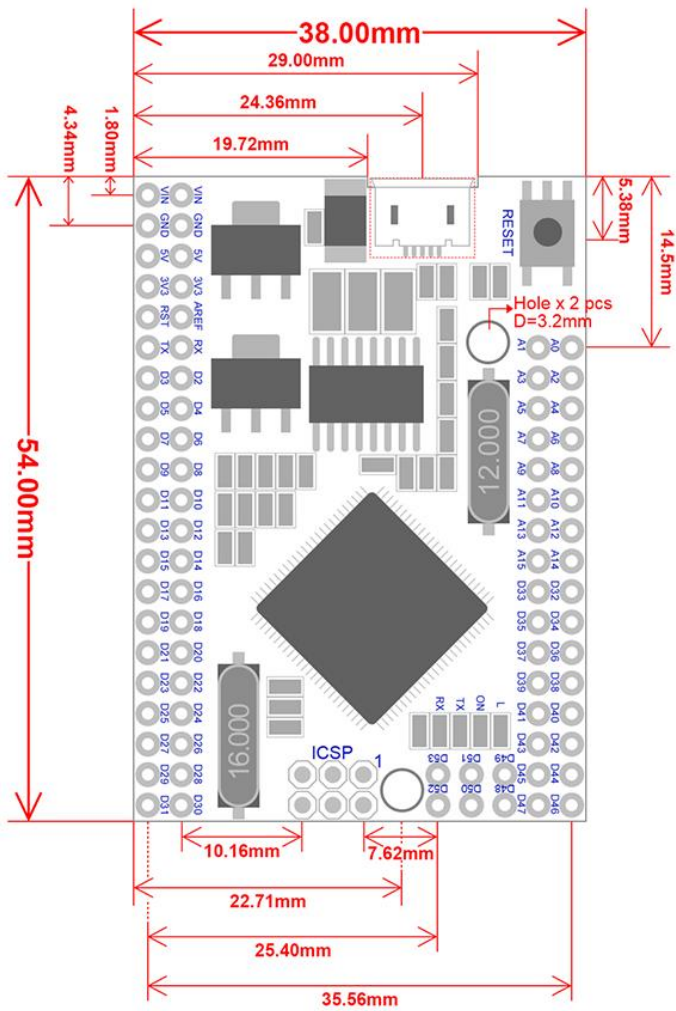
Board Details:



Comparison with Standard Mega 2560:



Detailed Dimensions Diagram:



Made in China