

Pneumatic Fitting 10MM Tube To 3/8" Elbow Thread Male

Model:PL10-03



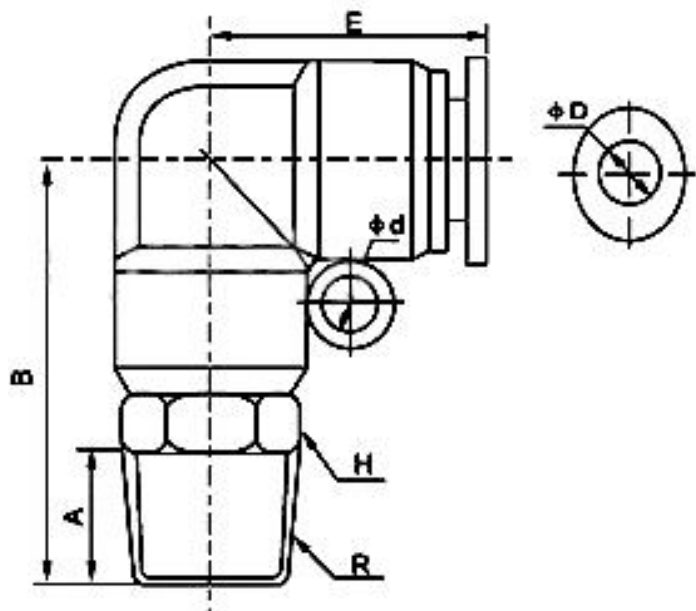
Features:

- Quick installation, simple and flexible, space-saving, easy to connect tube by one touch.
- Even after installation ,the direction of tubing can be changed freely
- All tapered threads are pre-coated with Teflon with fine seal performance.
- Nickel-Plated brass body ensures anti-corrosion and anti-contamination.
- Fittings are equipped with a Gasket, O-ring and Teflon-treatment on the thread.

Specifications:

Gender	Male
Pressure Range	0~1.0 MPa (0~150 PSI)
Negative Pressure	-100 Kpa (-750Torr) (-29.5 In Hg)
Max Pressure	1.5 Mpa (250PSI)
Applicable Tube	Polyurethane, Nylon, Polyethylene, Polypropylene
Used for	Pneumatic Air
Release Button	POM (Poly oxy methylene copolymer)
Plastic Body	PBT (Polybutylene terephthalate)
Thread Sealant	Teflon
Used with Tube Size	1/2" (Outside Diameter)
Temperature Range	0 ~ 60 °C (32~140F)
Material	Plastic and Nickel Plated Brass
Main Color	Blue and Yellow Metal

Dimensions:



Model	ΦD	R	A	B	H	E	Φd
PL6-01	6	R1/8	7	27.5	12	20.8	3.5
PL6-02	6	R1/4	9	29.5	14	20.8	3.5
PL6-03	6	R3/8	10	30.5	17	20.8	3.5
PL6-04	6	R1/2	11	32	21	20.8	3.5
PL8-01	8	R1/8	8	31.7	14	23.5	4.5
PL8-02	8	R1/4	10	33.8	14	23.5	4.5
PL8-03	8	R3/8	10	33.8	17	23.5	4.5
PL8-04	8	R1/2	11	35.5	21	23.5	4.5
PL10-01	10	R1/8	8	35.5	17	27.4	4.5
PL10-02	10	R1/4	10	37.5	17	27.4	4.5
PL10-03	10	R3/8	10	38	17	27.4	4.5
PL10-04	10	R1/2	11	38.6	21	27.4	4.5
PL12-01	12	R1/8	8	38	19	30.3	5
PL12-02	12	R1/4	10	39.5	19	30.3	5
PL12-03	12	R3/8	10	40.5	19	30.3	5
PL12-04	12	R1/2	11	42	21	30.3	5

Made in China