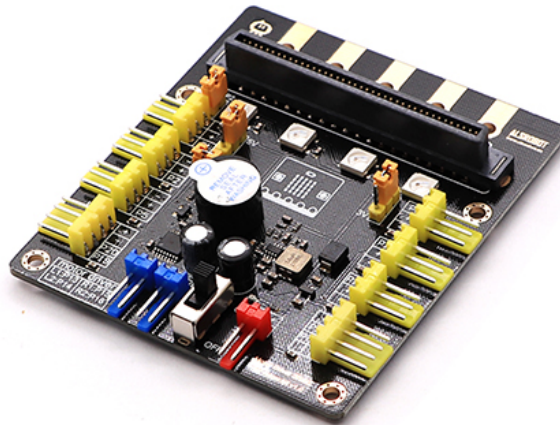


BBC Microbit Servo Motor Drive

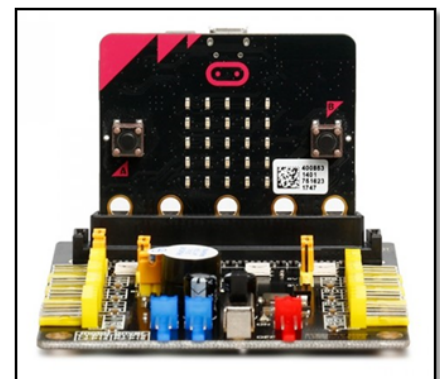


Description:

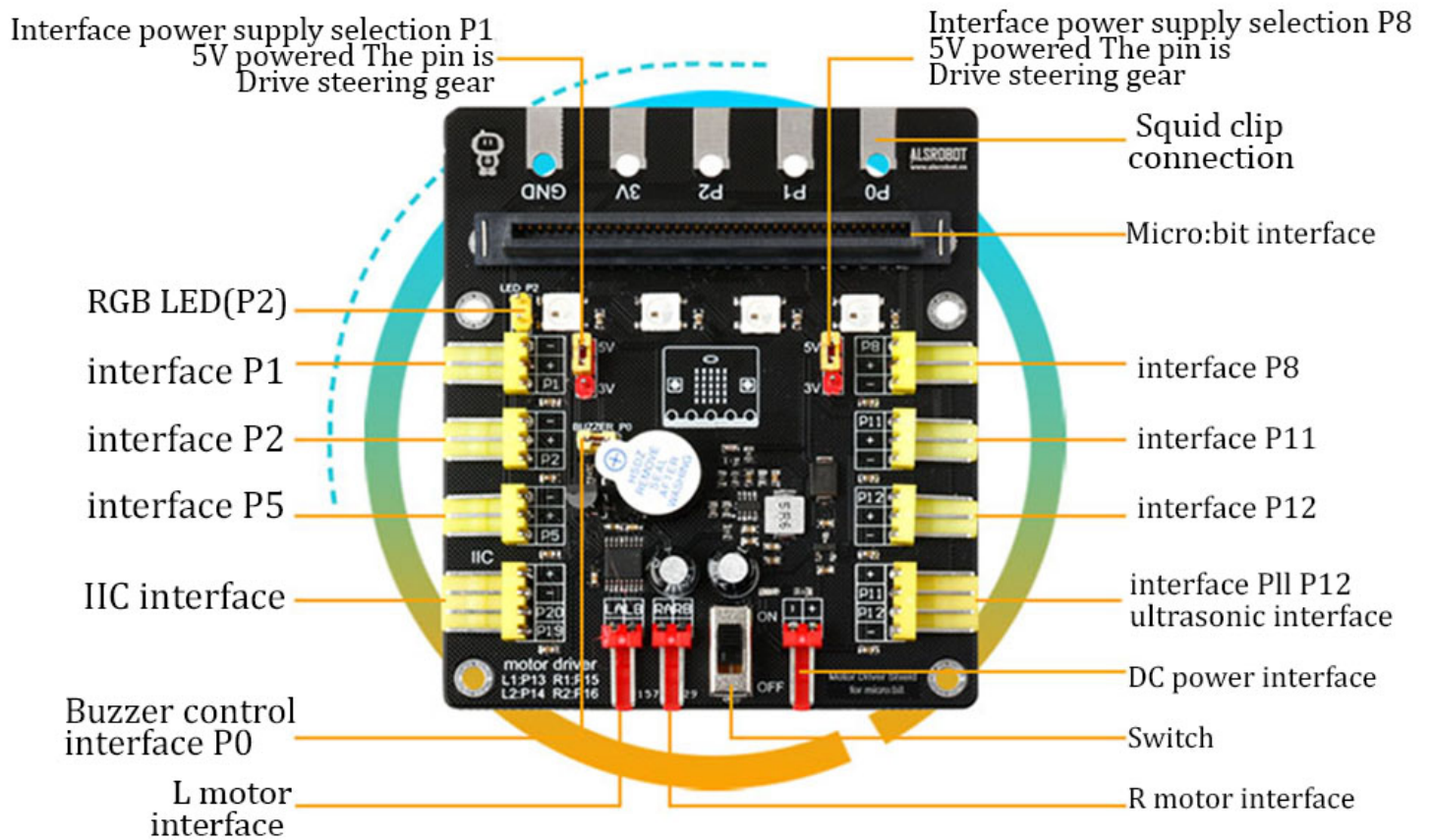
The micro:bit Motor Driver Shield is developed by ALSRobot, which is specially designed for the function extension of the micro:bit controller. Micro: bit motor driver shield onboard RGB LED, buzzer and dual dc motor driver, and the micro: bit IO interface in 3 p sensor interface derivation, connect to other modules conveniently, there are two IO interfaces also has the function of voltage choose, can drive Servos easily. With micro:bit motor drive the expansion board, you can play the powerful function of micro: bit more easily, build interactive works more easily, turn your creative ideas and eccentric ideas into reality.

Specification:

- Power Supply: External DC Power Supply
- Working Voltage: 6-10.8V
- Input Voltage (Recommend):7.4V
- Input Voltage (Extremity):10.8V
- Output Voltage: 5V 3.3V
- Digital Interface (PWM Output Interface):P1, P2, P5, P8, P11, P12
- Analog Interface: P1, P2
- Extension Interface: IIC interface; Ultrasonic module interface P11, P12.
- RGB Color Control: P2.
- Buzzer Control: P0.
- Motor Control: P13, P14, P15, P16.
- Indicator Light: power indicator light.
- Motor Driver Chip: DRV8833.
- Motor Driver Current: up to 1.5a per road.
- Size: 70mm*80mm



Pinout Interface:



Made in China