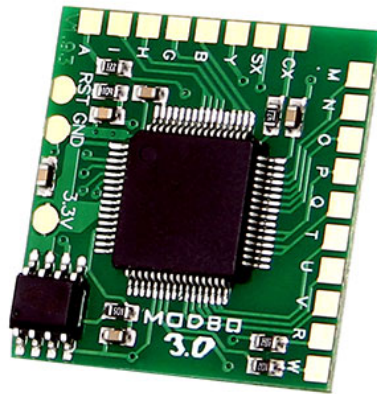
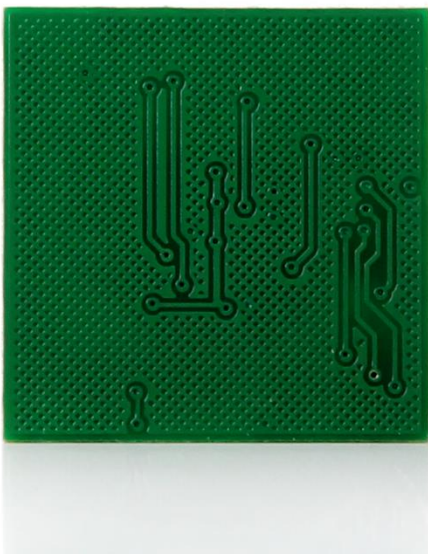


Modbo 3.0 Mod Chip Modchip for Playstation PS2 (support 3000X-900XX)



Features:

- Fully compatible with ps2 v1-v16 PAL / USA / Jap
- Upgraded from modbo3.0, comes with original 100% v1.88 firmware, but it isn't upgradeable
- Comes with mini size board and the wiring point order is good for installation
- Automatic selection for PS2/PS1/DVD supports
- DVD region free incorporated
- Software selectable "PS2 Quick Load" option. (to skip PS2 logo and Quick boot PS2 games)
- Software selectable "PSX Quick Load" option (to skip PS1 logo and Quick boot PSX games)
- Easy to install (only 18 wires for V1-V8 and 20 wires for V9, V10, V11, V12, V13)
- CPLD chip (3.3V power supply) based IC for enhanced stability
- Automatic "MACROVISION=OFF" on all PS2 from V3 to V16 without additional wires
- Automatic "green fix" (no more need to change the cable to see your DVD movies on the PS2)
- Imports games fix (all PSX import games are played at full screen and full color)
- Stealth-mode (the modchip can be switched off and becomes invisible to online gaming)
- Sleep-mode (the modchip will switch off itself after boot)
- Supports DVD-9 games
- Plays all CD's and DVD's games (both, import or backup's)
- Supports multi-disk games
- Supports anti-mod PS1 games (only for V9 - V16 PS2)
- Very reliable (all the Modchips are 100% tested before delivery)
- Very stable (thanks to sleep mode the IC will never overheat)
- CD lens safe (avoid CD lens damage by sending un-necessary signal to drive controller)
- Supports DEV1 and DEV2 for memory card booting



Made in China