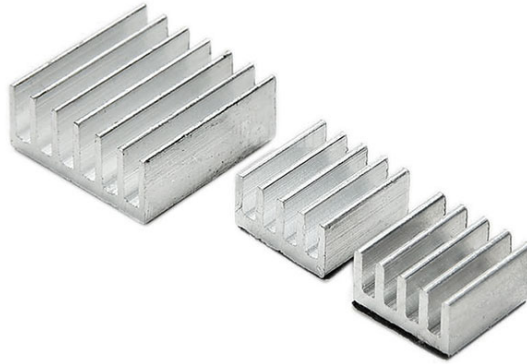


Raspberry Pi Heat Sink Set

RaspberryPi



Description:

A set of aluminum heat sink (3 pcs)

1x 14mm (L) x 14mm (W) x 5mm (H) heat sink for SOC

1x 9mm (L) x 9mm (W) x 4mm (H) heat sink for the voltage regulator

1x 9mm (L) x 9mm (W) x 4mm (H) heat sink for LAN9512

Features:

- The heat sink has an adhesive layer on the back. Just peel the adhesive layer and stick to your board.
- This heat sink set is designed specifically for Raspberry Pi, its function is to cool down the board and make your Raspberry operate safely, thus reducing the risk of hardware failure due to overheating.

Installing instructions:

- 1) Make sure the chip module is free from dirt and oil.
- 2) Peel the protective cover on the base of the heat sink chips.
- 3) Affix the heat sink on the chip module and apply firm pressure.



Made in China